

Anti-RPTOR antibody (888-1013) (STJ11104522)

GENERAL INFORMATION

| | |
|---------------|--------------------|
| Product Type | Primary antibodies |
| Applications | WB/ELISA |
| Host / Source | Rabbit |
| Reactivity | Human/Mouse/Rat |

PRODUCT PROPERTIES

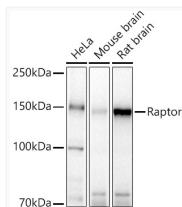
| | |
|---------------------|--|
| Clonality | Polyclonal |
| Concentration | Lot specific |
| Conjugation | Unconjugated |
| Purification | Affinity purification |
| Dilution Range | WB:1:500-1:2000 ELISA:Recommended starting concentration is 1 µg/mL. Please optimize the concentration based on your specific assay requirements. |
| Formulation | PBS with 0.05% Proclin300, 50% Glycerol, pH 7.3. |
| Isotype | IgG |
| Molecular Weight | Protein Mw: 149kDa Observed Mw: 150kDa |
| Storage Instruction | Store at -20°C for up to 1 year from the date of receipt, and avoid repeat freeze-thaw cycles. |

TARGET INFORMATION

| | |
|--------------------|---|
| Gene ID | 57521 |
| Gene Symbol | RPTOR |
| UniProt ID | RPTOR_HUMAN |
| Immunogen Region | 888-1013 |
| Immunogen Sequence | LTNDVAKQPVSRLPSSGRPG TTGPAGAQYTPHSHQFPRTR KMFDKGPPEQTADDADDAAGH KSFISATVQTGFCDWSARYF AQPVMKIPEEHDLSEQIRKE REWRFLRNSRVRRAQQVIQ KGITRL |
| Specificity | Recombinant fusion protein containing a sequence corresponding to amino acids 888-1013 of human Raptor (NP_065812.1). |

ADDITIONAL INFORMATION

Note STRICTLY FOR FURTHER SCIENTIFIC RESEARCH USE ONLY (RUO). MUST NOT TO BE USED IN DIAGNOSTIC OR THERAPEUTIC APPLICATIONS.



Western blot analysis of various lysates, using Raptor Rabbit polyclonal antibody (STJ11104522) at 1:500 dilution. Secondary antibody: HRP Goat Anti-Rabbit IgG (H+L) (STJS000856) at 1:10000 dilution. Lysates/proteins: 25µg per lane. Blocking buffer: 3% nonfat dry milk in TBST. Detection: ECL Basic Kit. Exposure time: 30s.