

## Anti-SMAD1 antibody (20-240) (STJ11104508)

### GENERAL INFORMATION

Product Type	Primary antibodies
Applications	WB/IHC-P/IF/ICC/ELISA
Host / Source	Rabbit
Reactivity	Human/Mouse/Rat

### PRODUCT PROPERTIES

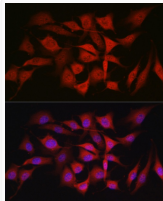
Clonality	Polyclonal
Concentration	Lot specific
Conjugation	Unconjugated
Purification	Affinity purification
Dilution Range	WB:1:500-1:1000 IHC-P:1:50-1:200 IF/ICC:1:50-1:200 ELISA:Recommended starting concentration is 1 Mu g/mL. Please optimize the concentration based on your specific assay requirements.
Formulation	PBS with 0.05% Proclin300, 50% Glycerol, pH 7.3.
Isotype	IgG
Molecular Weight	Protein Mw: 52kDa Observed Mw: 60kDa
Storage Instruction	Store at -20°C for up to 1 year from the date of receipt, and avoid repeat freeze-thaw cycles.

### TARGET INFORMATION

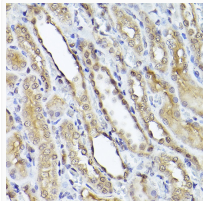
Gene ID	<a href="#">4086</a>
Gene Symbol	<a href="#">SMAD1</a>
UniProt ID	<a href="#">SMAD1_HUMAN</a>
Immunogen Region	20-240
Immunogen Sequence	WKQGDEEEKWAEKAVDALVK KLKKKKGAMEELEKALSCPG QPSNCVTIPRSLDGRLQVSH RKGLPHVIYCRVWRWPDLOS HHELKPLECCEFFPGSKQKE VCINPYHYKRVESPVLPVPL VPRHSEYNPQHSLLAQFRNL GQNEPHMPLNATFPDSFQQP NSHPPFHSPNSSYPNSPGSS SSTYPHSPSTSSDPGSPFQMP ADTPPPAYLPPEDPMTQDGS Q
Specificity	Recombinant fusion protein containing a sequence corresponding to amino acids 20-240 of human Smad1 (NP_001003688.1).

### ADDITIONAL INFORMATION

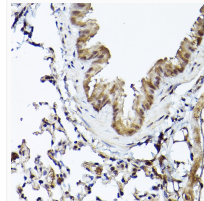
Note STRICTLY FOR FURTHER SCIENTIFIC RESEARCH USE ONLY (RUO). MUST NOT TO BE USED IN DIAGNOSTIC OR THERAPEUTIC APPLICATIONS.



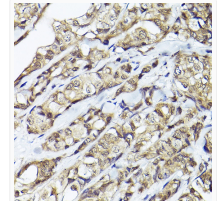
Immunofluorescence analysis of NIH/3T3 cells using Smad1 Rabbit polyclonal antibody (STJ11104508) at dilution of 1:50 (40x lens). Blue: DAPI for nuclear staining.



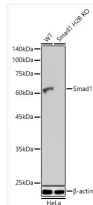
Immunohistochemistry analysis of paraffin-embedded rat kidney using Smad1 Rabbit polyclonal antibody (STJ11104508) at dilution of 1:50 (40x lens). Perform high pressure antigen retrieval with 10 mM citrate buffer pH 6.0 before commencing with immunohistochemistry staining protocol.



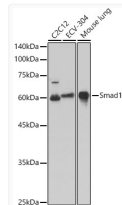
Immunohistochemistry analysis of paraffin-embedded mouse lung using Smad1 Rabbit polyclonal antibody (STJ11104508) at dilution of 1:50 (40x lens). Perform high pressure antigen retrieval with 10 mM citrate buffer pH 6.0 before commencing with immunohistochemistry staining protocol.



Immunohistochemistry analysis of paraffin-embedded human breast cancer using Smad1 Rabbit polyclonal antibody (STJ11104508) at dilution of 1:50 (40x lens). Perform high pressure antigen retrieval with 10 mM citrate buffer pH 6.0 before commencing with immunohistochemistry staining protocol.



Western blot analysis of extracts from wild type (WT) and Smad1 knockout (KO) HeLa cells, using Smad1 antibody (STJ11104508) at 1:1000 dilution. Secondary antibody: HRP Goat Anti-Rabbit IgG (H+L) (STJS000856) at 1:10000 dilution. Lysates/proteins: 25 Mu g per lane. Blocking buffer: 3% nonfat dry milk in TBST. Detection: ECL Basic Kit. Exposure time: 10s.



Western blot analysis of extracts of various cell lines, using Smad1 antibody (STJ11104508) at 1:1000 dilution. Secondary antibody: HRP Goat Anti-Rabbit IgG (H+L) (STJS000856) at 1:10000 dilution. Lysates/proteins: 25 Mu g per lane. Blocking buffer: 3% nonfat dry milk in TBST. Detection: ECL Basic Kit. Exposure time: 10s.