

Anti-PROM1 antibody (179-433) (STJ11104487)

GENERAL INFORMATION

Product Type	Primary antibodies
Applications	WB/IHC-P/IF/ICC/IP/ELISA
Host / Source	Rabbit
Reactivity	Human/Rat

PRODUCT PROPERTIES

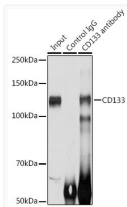
Clonality	Polyclonal
Concentration	Lot specific
Conjugation	Unconjugated
Purification	Affinity purification
Dilution Range	WB:1:100-1:500 IHC-P:1:50-1:200 IF/ICC:1:50-1:200 IP:0.5 Mu g-4 Mu g antibody for 200 Mu g-400 Mu g extracts of whole cells ELISA:Recommended starting concentration is 1 Mu g/mL. Please optimize the concentration based on your specific
Formulation	PBS with 0.05% Proclin300, 50% Glycerol, pH 7.3.
Isotype	IgG
Molecular Weight	Protein Mw: 97kDa Observed Mw: 120kDa
Storage Instruction	Store at -20°C for up to 1 year from the date of receipt, and avoid repeat freeze-thaw cycles.

TARGET INFORMATION

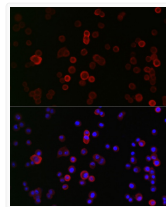
Gene ID	8842
Gene Symbol	PROM1
UniProt ID	PROM1_HUMAN
Immunogen Region	179-433
Immunogen Sequence	ANHQVRTRIKRSRKLADSNF KDLRLLNETPEQIKYILAQ YNTTKDKAFTDLNSINSVLG GGILDRLPNIIPVLDEIKS MATAIKETKEALENMNSTLK SLHQQSTQLSSSLTSVKTSL RSSLNDPLCLVHPSSSETCNS IRLSLSQLNSNPQLRQLPPV DAELDNVNNVLRDLDGLVQ QGYQSLNDIPDRVQRQTTTV VAGIKRVLNSIGSDIDNVQT RLPQDILSAFSVYVNNTE
Specificity	Recombinant fusion protein containing a sequence corresponding to amino acids 179-433 of human PROM1 (NP_006008.1).

ADDITIONAL INFORMATION

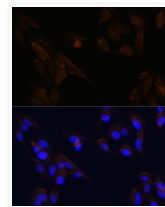
Note STRICTLY FOR FURTHER SCIENTIFIC RESEARCH USE ONLY (RUO). MUST NOT TO BE USED IN DIAGNOSTIC OR THERAPEUTIC APPLICATIONS.



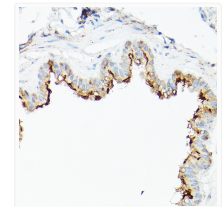
Immunoprecipitation analysis of 200 Mu g extracts of HT-29 cells using 3 Mu g CD133 antibody (STJ11104487). Western blot was performed from the immunoprecipitate using CD133 antibody (STJ11104487) at a dilution of 1:1000.



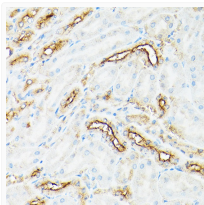
Immunofluorescence analysis of HT-29 cells using [KD Validated] PROM1 Rabbit polyclonal antibody (STJ11104487) at dilution of 1:100 (40x lens). Secondary antibody: Cy3 Goat Anti-Rabbit IgG (H+L) at 1:500 dilution. Blue: DAPI for nuclear staining.



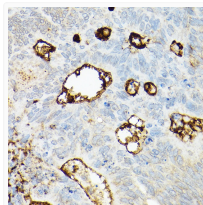
Immunofluorescence analysis of C6 cells using [KD Validated] PROM1 Rabbit polyclonal antibody (STJ11104487) at dilution of 1:100. Secondary antibody: Cy3 Goat Anti-Rabbit IgG (H+L) at 1:500 dilution. Blue: DAPI for nuclear staining.



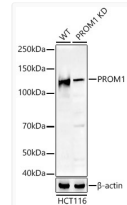
Immunohistochemistry analysis of PROM1 in paraffin-embedded rat lung using CD133 Rabbit polyclonal antibody (STJ11104487) at dilution of 1:200 (40x lens). Perform high pressure antigen retrieval with 10 mM citrate buffer pH 6.0 before commencing with immunohistochemistry staining protocol.



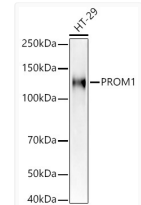
Immunohistochemistry analysis of PROM1 in paraffin-embedded rat kidney using CD133 Rabbit polyclonal antibody (STJ11104487) at dilution of 1:200 (40x lens). Perform high pressure antigen retrieval with 10 mM citrate buffer pH 6.0 before commencing with immunohistochemistry staining protocol.



Immunohistochemistry analysis of PROM1 in paraffin-embedded human colon carcinoma using CD133 Rabbit polyclonal antibody (STJ11104487) at dilution of 1:200 (40x lens). Perform high pressure antigen retrieval with 10 mM citrate buffer pH 6.0 before commencing with immunohistochemistry staining protocol.



Western blot analysis of lysates from wild type (WT) and PROM1 knockdown (KD) HCT116 cells, using [KD Validated] PROM1 Rabbit polyclonal antibody (STJ11104487) at 1:400 dilution. Secondary antibody: HRP Goat Anti-Rabbit IgG (H+L) (STJS000856) at 1:10000 dilution. Lysates/proteins: 25 Mu g per lane. Blocking buffer: 3% nonfat dry milk in TBST. Detection: ECL Basic Kit. Exposure time: 90s.



Western blot analysis of lysates from HT-29 cells, using [KD Validated] PROM1 Rabbit polyclonal antibody (STJ11104487) at 1:400 dilution. Secondary antibody: HRP Goat Anti-Rabbit IgG (H+L) (STJS000856) at 1:10000 dilution. Lysates/proteins: 25 Mu g per lane. Blocking buffer: 3% nonfat dry milk in TBST. Detection: ECL Basic Kit. Exposure time: 90s.