

Anti-ATG4D antibody (1-230) (STJ11104482)

GENERAL INFORMATION

Product Type	Primary antibodies
Applications	WB/IF/ICC/ELISA
Host / Source	Rabbit
Reactivity	Human/Mouse

PRODUCT PROPERTIES

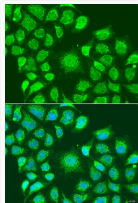
Clonality	Polyclonal
Concentration	Lot specific
Conjugation	Unconjugated
Purification	Affinity purification
Dilution Range	WB:1:500-1:2000 IF/CC:1:50-1:200 ELISA:Recommended starting concentration is 1 Mu g/mL. Please optimize the concentration based on your specific assay requirements.
Formulation	PBS with 0.02% Sodium Azide, 50% Glycerol, pH 7.3.
Isotype	IgG
Molecular Weight	Protein Mw: 53kDa Observed Mw: Refer to figures
Storage Instruction	Store at -20°C for up to 1 year from the date of receipt, and avoid repeat freeze-thaw cycles.

TARGET INFORMATION

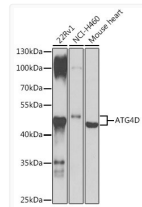
Gene ID	84971
Gene Symbol	ATG4D
UniProt ID	ATG4D_HUMAN
Immunogen Region	1-230
Immunogen Sequence	MNSVSPAAAQYRSSSPEDAR RRPEARRPRGPRGDPNGLG PSGASGPALGSPGAGPSEPD EVDKFKAKFLTAWNIVKYGW VVKSRTSFSKISSIHLGRR YRFEGEGDIQRFQDFVSRL WLTYRRDFPPLPGGCLTSDC GWGCMRLRSGQMMLAQGLLH FLPRDWTWAEGMGLGPELS GSASPSRYHGPARWMPPRWA QGAPELEQERRHRQIVSWFA DHPRAPFGLH
Specificity	Recombinant fusion protein containing a sequence corresponding to amino acids 1-230 of human ATG4D (NP_116274.3).

ADDITIONAL INFORMATION

Note STRICTLY FOR FURTHER SCIENTIFIC RESEARCH USE ONLY (RUO). MUST NOT TO BE USED IN DIAGNOSTIC OR THERAPEUTIC APPLICATIONS.



Immunofluorescence analysis of U2OS cells using ATG4D Rabbit polyclonal antibody (STJ11104482) at dilution of 1:100. Secondary antibody: Cy3 Goat Anti-Rabbit IgG (H+L) at 1:500 dilution. Blue: DAPI for nuclear staining.



Western blot analysis of various lysates using ATG4D Rabbit polyclonal antibody (STJ11104482) at 1:1000 dilution. Secondary antibody: HRP Goat Anti-Rabbit IgG (H+L) (STJS000856) at 1:10000 dilution. Lysates/proteins: 25 Mu g per lane. Blocking buffer: 3% nonfat dry milk in TBST. Detection: ECL Basic Kit. Exposure time: 90s.