

Anti-AKT1S1 antibody (150-256) (STJ11104478)

GENERAL INFORMATION

Product Type	Primary antibodies
Applications	WB/ELISA
Host / Source	Rabbit
Reactivity	Human

PRODUCT PROPERTIES

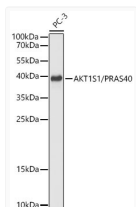
Clonality	Polyclonal
Concentration	Lot specific
Conjugation	Unconjugated
Purification	Affinity purification
Dilution Range	WB:1:500-1:1000 ELISA:Recommended starting concentration is 1 Mu g/mL. Please optimize the concentration based on your specific assay requirements.
Formulation	PBS with 0.01% Thimerosal, 50% Glycerol, pH 7.3.
Isotype	IgG
Molecular Weight	Protein Mw: 27kDa Observed Mw: 40kDa
Storage Instruction	Store at -20°C for up to 1 year from the date of receipt, and avoid repeat freeze-thaw cycles.

TARGET INFORMATION

Gene ID	84335
Gene Symbol	AKT1S1
UniProt ID	AKTS1_HUMAN
Immunogen Region	150-256
Immunogen Sequence	STDDGSLSEETPAGPPTCSV PPASALPTQQYAKSLPVSVP VWGFKEKRTEARSSDEENGP PSSPDLDRIAASMRALVLR EEDTQVFGDLPRPRLNTSDF QKLKRKY
Specificity	A synthetic peptide corresponding to a sequence within amino acids 150-256 of human AKT1S1/PRAS40 (NP_001092103.1).

ADDITIONAL INFORMATION

Note STRICTLY FOR FURTHER SCIENTIFIC RESEARCH USE ONLY (RUO). MUST NOT TO BE USED IN DIAGNOSTIC OR THERAPEUTIC APPLICATIONS.



Western blot analysis of lysates from PC-3 cells using AKT1S1/PRAS40 Rabbit polyclonal antibody (STJ11104478) at 1:1000 dilution. Secondary antibody: HRP Goat Anti-Rabbit IgG (H+L) (STJS000856) at 1:10000 dilution. Lysates/proteins: 25 Mu g per lane. Blocking buffer: 3% nonfat dry milk in TBST. Detection: ECL Basic Kit. Exposure time: 5s.