

Anti-CAPN1 antibody (20-330) (STJ11104473)

GENERAL INFORMATION

Product Type	Primary antibodies
Applications	WB/ELISA
Host / Source	Rabbit
Reactivity	Human

PRODUCT PROPERTIES

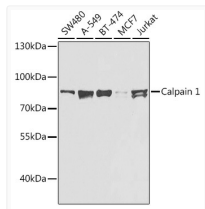
Clonality	Polyclonal
Concentration	Lot specific
Conjugation	Unconjugated
Purification	Affinity purification
Dilution Range	WB:1:500-1:2000 ELISA:Recommended starting concentration is 1 µg/mL. Please optimize the concentration based on your specific assay requirements.
Formulation	PBS with 0.02% Sodium Azide, 50% Glycerol, pH 7.3.
Isotype	IgG
Molecular Weight	Protein Mw: 82kDa Observed Mw: Refer to figures
Storage Instruction	Store at -20°C for up to 1 year from the date of receipt, and avoid repeat freeze-thaw cycles.

TARGET INFORMATION

Gene ID	823
Gene Symbol	CAPN1
UniProt ID	CAN1_HUMAN
Immunogen Region	20-330
Immunogen Sequence	KQRARELGLGRHENAIKYLQDYEQLRVRCVLSGTLFRDEAFPPVPQSLGKDLGPNSSK TYGIKWKRPTELLSNPQFIVDGATRTRDICQGGALGDCWLLA AIASLTLNDTLLHRVVPHGQ SFQNGYAGIFHFQLWQFGEWVDVVVDLLPIKDGKLVFVHSAEGNEFWALLKAYAKVN GSYEALSGGSTSEGFEDFTGVTWEVYELRKAPSDLYQIILKALERGSLLGCSIDISSVL
Specificity	Recombinant fusion protein containing a sequence corresponding to amino acids 20-330 of human Calpain 1 (NP_005177.2).

ADDITIONAL INFORMATION

Note **STRICTLY FOR FURTHER SCIENTIFIC RESEARCH USE ONLY (RUO). MUST NOT TO BE USED IN DIAGNOSTIC OR THERAPEUTIC APPLICATIONS.**



Western blot analysis of various lysates using Calpain 1 Rabbit polyclonal antibody (STJ11104473) at 1:1000 dilution. Secondary antibody: HRP Goat Anti-Rabbit IgG (H+L) (STJS000856) at 1:10000 dilution. Lysates/proteins: 25 µg per lane. Blocking buffer: 3% nonfat dry milk in TBST.