

Anti-p53 antibody (290-390) (STJ11104448)

GENERAL INFORMATION

Product Type	Primary antibodies
Applications	WB/IHC-P/IF/ICC/IP/ELISA
Host / Source	Rabbit
Reactivity	Human/Mouse

PRODUCT PROPERTIES

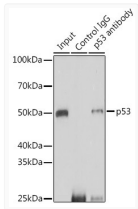
Clonality	Polyclonal
Concentration	Lot specific
Conjugation	Unconjugated
Purification	Affinity purification
Dilution Range	WB:1:500-1:1000 IHC-P:1:50-1:200 IF/CC:1:50-1:200 IP:0.5 Mu g-4 Mu g antibody for 200 Mu g-400 Mu g extracts of whole cells ELISA:Recommended starting concentration is 1 Mu g/mL. Please optimize the concentration based on your specif
Formulation	PBS with 0.02% Sodium Azide, 50% Glycerol, pH 7.3.
Isotype	IgG
Molecular Weight	Protein Mw: 43kDa Observed Mw: Refer to figures
Storage Instruction	Store at -20°C for up to 1 year from the date of receipt, and avoid repeat freeze-thaw cycles.

TARGET INFORMATION

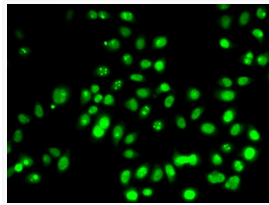
Gene ID	22059
Gene Symbol	Tp53
UniProt ID	P53_MOUSE
Immunogen Region	290-390
Immunogen Sequence	EVLCPELPFGSAKRALPTCT SASPPQKKKPLDGEYFTLKI RGRKRFEMFRELNEALELKD AHATEESGDSRAHSSYLKTK KGGQSTSRHKKTMMVKKVGPDSD
Specificity	A synthetic peptide corresponding to a sequence within amino acids 290-390 of mouse p53 (NP_035770.2).

ADDITIONAL INFORMATION

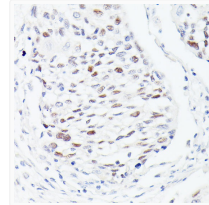
Note **STRICTLY FOR FURTHER SCIENTIFIC RESEARCH USE ONLY (RUO). MUST NOT TO BE USED IN DIAGNOSTIC OR THERAPEUTIC APPLICATIONS.**



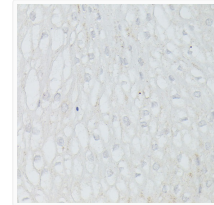
Immunoprecipitation analysis of 200 Mu g extracts of 293T cells using 3 Mu g p53 antibody (STJ11104448). Western blot was performed from the immunoprecipitate using p53 antibody (STJ11104448) at a dilution of 1:1000.



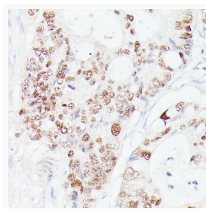
Immunofluorescence analysis of HeLa cells using p53 Rabbit polyclonal antibody (STJ11104448). Secondary antibody: Cy3 Goat Anti-Rabbit IgG (H+L) at 1:500 dilution.



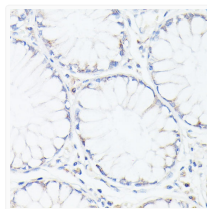
Immunohistochemistry analysis of p53 in paraffin-embedded human esophageal cancer using p53 Rabbit polyclonal antibody (STJ11104448) at dilution of 1:100 (40x lens). Perform microwave antigen retrieval with 10 mM PBS buffer pH 7. 2 before commencing with immunohistochemistry staining protocol.



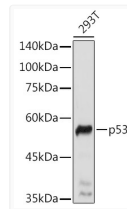
Immunohistochemistry analysis of p53 in paraffin-embedded human esophageal using p53 Rabbit polyclonal antibody (STJ11104448) at dilution of 1:100 (40x lens). Perform microwave antigen retrieval with 10 mM PBS buffer pH 7. 2 before commencing with immunohistochemistry staining protocol.



Immunohistochemistry analysis of p53 in paraffin-embedded human colon carcinoma using p53 Rabbit polyclonal antibody (STJ11104448) at dilution of 1:100 (40x lens). Perform microwave antigen retrieval with 10 mM PBS buffer pH 7. 2 before commencing with immunohistochemistry staining protocol.



Immunohistochemistry analysis of p53 in paraffin-embedded human colon using p53 Rabbit polyclonal antibody (STJ11104448) at dilution of 1:100 (40x lens). Perform microwave antigen retrieval with 10 mM PBS buffer pH 7. 2 before commencing with immunohistochemistry staining protocol.



Western blot analysis of lysates from 293T cells, using p53 Rabbit polyclonal antibody (STJ11104448) at 1:1000 dilution. Secondary antibody: HRP Goat Anti-Rabbit IgG (H+L) (STJS000856) at 1:10000 dilution. Lysates/proteins: 25 Mu g per lane. Blocking buffer: 3% nonfat dry milk in TBST. Detection: ECL Basic Kit. Exposure time: 5s.