

## Anti-STIM1 antibody (451-685) (STJ11104440)

### GENERAL INFORMATION

Product Type	Primary antibodies
Applications	WB/IHC-P/IP/ELISA
Host / Source	Rabbit
Reactivity	Human/Mouse/Rat

### PRODUCT PROPERTIES

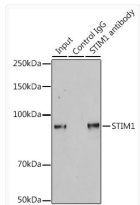
Clonality	Polyclonal
Concentration	Lot specific
Conjugation	Unconjugated
Purification	Affinity purification
Dilution Range	WB:1:500-1:2000 IHC-P:1:50-1:200 IP:0.5 Mu g-4 Mu g antibody for 200 Mu g-400 Mu g extracts of whole cells ELISA:Recommended starting concentration is 1 Mu g/mL. Please optimize the concentration based on your specific assay requirements.
Formulation	PBS with 0.01% Thimerosal, 50% Glycerol, pH 7.3.
Isotype	IgG
Molecular Weight	Protein Mw: 77kDa Observed Mw: Refer to figures
Storage Instruction	Store at -20°C for up to 1 year from the date of receipt, and avoid repeat freeze-thaw cycles.

### TARGET INFORMATION

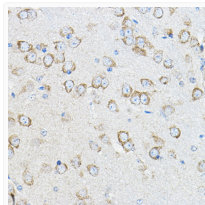
Gene ID	<a href="#">6786</a>
Gene Symbol	<a href="#">STIM1</a>
UniProt ID	<a href="#">STIM1_HUMAN</a>
Immunogen Region	451-685
Immunogen Sequence	VAALNIDPSWMGSTRPNPAH FIMTDDVDDMDEEIVSPLSM QSPSLQSSVRQLRTEPQHGL GSQRDLTHSDSESSLHMSDR QRVAPKPPQMSRAADEALNA MTSNGSHRLIEGVHPGSLVE KLPDSPALAKKALLALNHGL DKAHSLMELSPSPAPPGGSPH LDSSRSHSPSPDPDTPSPV GDSRALQASRNTRIPHLGK KAVAEEDNGSIGEETDSSPG RKKFPLKIFKPLKK
Specificity	Recombinant fusion protein containing a sequence corresponding to amino acids 451-685 of human STIM1 (NP_003147.2).

### ADDITIONAL INFORMATION

Note **STRICTLY FOR FURTHER SCIENTIFIC RESEARCH USE ONLY (RUO). MUST NOT TO BE USED IN DIAGNOSTIC OR THERAPEUTIC APPLICATIONS.**



Immunoprecipitation analysis of 200 Mu g extracts of HeLa cells using 3 Mu g STIM1 antibody (STJ11104440). Western blot was performed from the immunoprecipitate using STIM1 antibody (STJ11104440) at a dilution of 1:1000.



Immunohistochemistry analysis of STIM1 in paraffin-embedded mouse brain using STIM1 Rabbit polyclonal antibody (STJ11104440) at dilution of 1:100 (40x lens). Perform microwave antigen retrieval with 10 mM PBS buffer pH 7.2 before commencing with immunohistochemistry staining protocol.