

Anti-PCIF1 antibody (1-200) (STJ11104434)

GENERAL INFORMATION

Product Type	Primary antibodies
Applications	WB/IHC-P/IP/ELISA
Host / Source	Rabbit
Reactivity	Human/Mouse/Rat

PRODUCT PROPERTIES

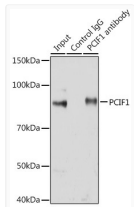
Clonality	Polyclonal
Concentration	Lot specific
Conjugation	Unconjugated
Purification	Affinity purification
Dilution Range	WB:1:500-1:2000 IHC-P:1:50-1:100 IP:0.5 Mu g-4 Mu g antibody for 200 Mu g-400 Mu g extracts of whole cells ELISA:Recommended starting concentration is 1 Mu g/mL. Please optimize the concentration based on your specific assay requirements.
Formulation	PBS with 0.05% Proclin300, 50% Glycerol, pH 7.3.
Isotype	IgG
Molecular Weight	Protein Mw: 81kDa Observed Mw: Refer to figures
Storage Instruction	Store at -20°C for up to 1 year from the date of receipt, and avoid repeat freeze-thaw cycles.

TARGET INFORMATION

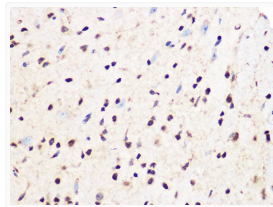
Gene ID	63935
Gene Symbol	PCIF1
UniProt ID	CAPAM_HUMAN
Immunogen Region	1-200
Immunogen Sequence	MANENHGSPREEASLLSHSP GTSNQSQPCSPKPIRLVQDL PEELVHAGWEKWCWSRRENRP YYFNRFNQSLWEMPVLGQH DVISDPLGLNATPLPQDSSL VETPPAENKPKRKRQLSEEQP SGNGVKKPKIEIPVPTGQS VPSSPSIPGPTLKMWTSP EDKQQAALLRPTEVYWDLDI QTNAVIKHRGPSEVLPPHPE
Specificity	Recombinant fusion protein containing a sequence corresponding to amino acids 1-200 of human PCIF1 (NP_071387.1).

ADDITIONAL INFORMATION

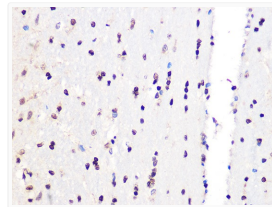
Note STRICTLY FOR FURTHER SCIENTIFIC RESEARCH USE ONLY (RUO). MUST NOT TO BE USED IN DIAGNOSTIC OR THERAPEUTIC APPLICATIONS.



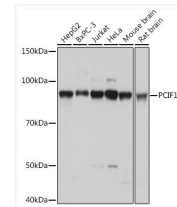
Immunoprecipitation analysis of 200 Mu g extracts of Jurkat cells using 3 Mu g PCIF1 antibody (STJ11104434). Western blot was performed from the immunoprecipitate using PCIF1 antibody (STJ11104434) at a dilution of 1:1000.



Immunohistochemistry analysis of PCIF1 in paraffin-embedded mouse spinal cord using PCIF1 Rabbit polyclonal antibody (STJ11104434) at dilution of 1:100 (40x lens). Perform microwave antigen retrieval with 10 mM Tris/EDTA buffer pH 9.0 before commencing with immunohistochemistry staining protocol.



Immunohistochemistry analysis of PCIF1 in paraffin-embedded rat brain using PCIF1 Rabbit polyclonal antibody (STJ11104434) at dilution of 1:100 (40x lens). Perform microwave antigen retrieval with 10 mM Tris/EDTA buffer pH 9.0 before commencing with immunohistochemistry staining protocol.



Western blot analysis of various lysates using PCIF1 Rabbit polyclonal antibody (STJ11104434) at 1:1000 dilution. Secondary antibody: HRP Goat Anti-Rabbit IgG (H+L) (STJS000856) at 1:10000 dilution. Lysates/proteins: 25 Mu g per lane. Blocking buffer: 3% nonfat dry milk in TBST. Detection: ECL Basic Kit. Exposure time: 1s.