

Anti-METTL3 antibody (1-156) (STJ11104420)

GENERAL INFORMATION

Product Type	Primary antibodies
Applications	WB/IHC-P/IP/ELISA
Host / Source	Rabbit
Reactivity	Human/Mouse/Rat

PRODUCT PROPERTIES

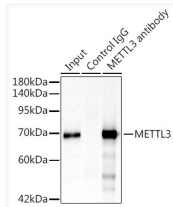
Clonality	Polyclonal
Concentration	Lot specific
Conjugation	Unconjugated
Purification	Affinity purification
Dilution Range	WB:1:500-1:1000 IHC-P:1:10-1:20 IHC-P:1:500-1:1000 ELISA:Recommended starting concentration is 1 μ g/mL. Please optimize the concentration based on your specific assay requirements.
Formulation	PBS with 0.05% Proclin300, 50% Glycerol, pH 7.3.
Isotype	IgG
Molecular Weight	Protein Mw: 64kDa Observed Mw: 75kDa
Storage Instruction	Store at -20°C for up to 1 year from the date of receipt, and avoid repeat freeze-thaw cycles.

TARGET INFORMATION

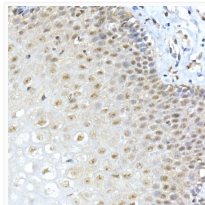
Gene ID	56339
Gene Symbol	METTL3
UniProt ID	MTA70_HUMAN
Immunogen Region	1-156
Immunogen Sequence	MSDTWSSIQAHKKQLDSLRE RLQRRRKQDSGHLDLRNPEA ALSPTFRSDSPVPTAPTSSGG PKPSTASAVPELATDPELEK KLLHLSLDLALTLPTDAVSI CLAISTPDAPATQDGVESLL QKFAAQELIEVKRGLLQDDA HPTLVYADHKSLSAM
Specificity	Recombinant fusion protein containing a sequence corresponding to amino acids 1-156 of human METTL3 (NP_062826.2).

ADDITIONAL INFORMATION

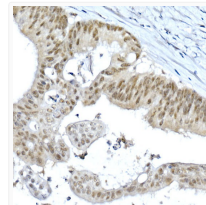
Note STRICTLY FOR FURTHER SCIENTIFIC RESEARCH USE ONLY (RUO). MUST NOT TO BE USED IN DIAGNOSTIC OR THERAPEUTIC APPLICATIONS.



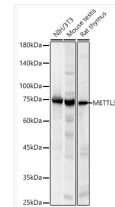
Immunoprecipitation analysis of 300 μ g extracts of 293T cells using 3 μ g METTL3 Rabbit polyclonal antibody (STJ11104420). Western blot was performed from the immunoprecipitate using METTL3 Rabbit polyclonal antibody (STJ11104420) at a dilution of 1:1000.



Immunohistochemistry analysis of paraffin-embedded Human esophagus using METTL3 antibody (STJ11104420) at dilution of 1:20 (40x lens). Perform high pressure antigen retrieval with 10 mM citrate buffer pH 6.0 before commencing with immunohistochemistry staining protocol.



Immunohistochemistry analysis of paraffin-embedded Human colon carcinoma using METTL3 antibody (STJ11104420) at dilution of 1:20 (40x lens). Perform high pressure antigen retrieval with 10 mM citrate buffer pH 6.0 before commencing with immunohistochemistry staining protocol.



Western blot analysis of various lysates, using METTL3 Rabbit polyclonal antibody (STJ11104420) at 1:1000 dilution. Secondary antibody: HRP Goat Anti-Rabbit IgG (H+L) (STJS000856) at 1:10000 dilution. Lysates/proteins: 25 μ g per lane. Blocking buffer: 3% nonfat dry milk in TBST. Detection: ECL Basic Kit. Exposure time: 20s.