

Anti-TDP2 antibody (1-200) (STJ11104400)

GENERAL INFORMATION

| | |
|---------------|--------------------|
| Product Type | Primary antibodies |
| Applications | WB/ELISA |
| Host / Source | Rabbit |
| Reactivity | Human/Mouse |

PRODUCT PROPERTIES

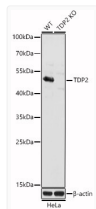
| | |
|---------------------|---|
| Clonality | Polyclonal |
| Concentration | Lot specific |
| Conjugation | Unconjugated |
| Purification | Affinity purification |
| Dilution Range | WB:1:1000-1:5000 ELISA:Recommended starting concentration is 1 Mu g/mL. Please optimize the concentration based on your specific assay requirements. |
| Formulation | PBS with 0.01% Thimerosal, 50% Glycerol, pH 7.3. |
| Isotype | IgG |
| Molecular Weight | Protein Mw: 41kDa Observed Mw: 41kDa |
| Storage Instruction | Store at -20°C for up to 1 year from the date of receipt, and avoid repeat freeze-thaw cycles. |

TARGET INFORMATION

| | |
|--------------------|--|
| Gene ID | 51567 |
| Gene Symbol | TDP2 |
| UniProt ID | TYDP2_HUMAN |
| Immunogen Region | 1-200 |
| Immunogen Sequence | MELGSCLEGGREAAEEEEGEP EVKKRRLLCVEFASVASCDA AVAQCFLAENDWEMERALNS YFEPPEESALERRPETISE PKTYVDLTNEETDSTTSKI SPSEDTQQENGSMFLITWN IDGLDLNLSERARGVCSYL ALYSPDVIFLQEVIPPYYSY LKKRSSNYEITGHEEGYFT AIMLKKSRVKLKSQEIIPFP |
| Specificity | Recombinant fusion protein containing a sequence corresponding to amino acids 1-200 of human TDP2 (NP_057698.2). |

ADDITIONAL INFORMATION

Note **STRICTLY FOR FURTHER SCIENTIFIC RESEARCH USE ONLY (RUO). MUST NOT TO BE USED IN DIAGNOSTIC OR THERAPEUTIC APPLICATIONS.**



Western blot analysis of lysates from wild type (WT) and TDP2 knockout (KO) HeLa (KO) cells, using [KO Validated] TDP2 Rabbit polyclonal antibody (STJ11104400) at 1:3000 dilution. Secondary antibody: HRP Goat Anti-Rabbit IgG (H+L) (STJS000856) at 1:10000 dilution. Lysates/proteins: 25 Mu g per lane. Blocking buffer: 3% nonfat dry milk in TBST. Detection: ECL Basic Kit. Exposure time: 10s.