

## Anti-TRMT2A antibody (1-250) (STJ11104340)

### GENERAL INFORMATION

Product Type	Primary antibodies
Applications	WB/IHC-P/ELISA
Host / Source	Rabbit
Reactivity	Human

### PRODUCT PROPERTIES

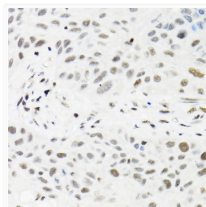
Clonality	Polyclonal
Concentration	Lot specific
Conjugation	Unconjugated
Purification	Affinity purification
Dilution Range	WB:1:500-1:2000 IHC-P:1:50-1:200 ELISA:Recommended starting concentration is 1 Mu g/mL. Please optimize the concentration based on your specific assay requirements.
Formulation	PBS with 0.02% Sodium Azide, 50% Glycerol, pH 7.3.
Isotype	IgG
Molecular Weight	Protein Mw: 69kDa Observed Mw: Refer to figures
Storage Instruction	Store at -20°C for up to 1 year from the date of receipt, and avoid repeat freeze-thaw cycles.

### TARGET INFORMATION

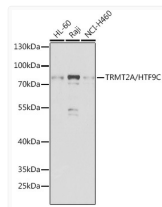
Gene ID	<a href="#">27037</a>
Gene Symbol	<a href="#">TRMT2A</a>
UniProt ID	<a href="#">TRM2A_HUMAN</a>
Immunogen Region	1-250
Immunogen Sequence	MSENLNDNEGPKPMESCGQES SSALSCTVSVPPAAPAAL EKEKEGAGAATGPGQPGLY SYIRDDLFTSEIFKLELQNV PRHASFSDVRRFLGRFGLQP HKTKLFGQPCCAFVTFRSAA ERDKALRVLHGALWKGKRLS VRLARPKADPMARRRRQEGE SEPPVTRVADVVTPLWTVPY AEQLERKQLECEQVLQKLAKEIGSTNRALLPWLLEQRHKH NKACCPLEGVRPSPQQTEY
Specificity	Recombinant fusion protein containing a sequence corresponding to amino acids 1-250 of human TRMT2A/HTF9C (NP_073564.3).

### ADDITIONAL INFORMATION

Note STRICTLY FOR FURTHER SCIENTIFIC RESEARCH USE ONLY (RUO). MUST NOT TO BE USED IN DIAGNOSTIC OR THERAPEUTIC APPLICATIONS.



Immunohistochemistry analysis of TRMT2A/HTF9C in paraffin-embedded human lung cancer using TRMT2A/HTF9C Rabbit polyclonal antibody (STJ11104340) at dilution of 1:100 (40x lens). Perform microwave antigen retrieval with 10 mM PBS buffer pH 7.2 before commencing with immunohistochemistry staining protocol.



Western blot analysis of various lysates using TRMT2A/HTF9C Rabbit polyclonal antibody (STJ11104340) at 1:1000 dilution. Secondary antibody: HRP Goat Anti-Rabbit IgG (H+L) (STJS000856) at 1:10000 dilution. Lysates/proteins: 25 Mu g per lane. Blocking buffer: 3% nonfat dry milk in TBST. Detection: ECL Basic Kit. Exposure time: 90s.