

Anti-ALPP antibody (260-460) (STJ11104336)

GENERAL INFORMATION

Product Type	Primary antibodies
Applications	WB/IP/ELISA
Host / Source	Rabbit
Reactivity	Human

PRODUCT PROPERTIES

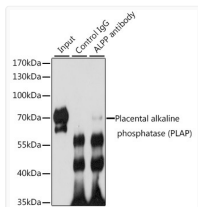
Clonality	Polyclonal
Concentration	Lot specific
Conjugation	Unconjugated
Purification	Affinity purification
Dilution Range	WB:1:500-1:2000 IP:0.5 Mu g-4 Mu g antibody for 200 Mu g-400 Mu g extracts of whole cells ELISA:Recommended starting concentration is 1 Mu g/mL. Please optimize the concentration based on your specific assay requirements.
Formulation	PBS with 0.02% Sodium Azide, 50% Glycerol, pH 7.3.
Isotype	IgG
Molecular Weight	Protein Mw: 58kDa Observed Mw: Refer to figures
Storage Instruction	Store at -20°C for up to 1 year from the date of receipt, and avoid repeat freeze-thaw cycles.

TARGET INFORMATION

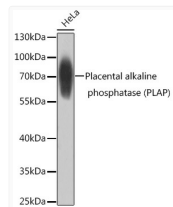
Gene ID	250
Gene Symbol	ALPP
UniProt ID	PPB1_HUMAN
Immunogen Region	260-460
Immunogen Sequence	LAKRQGARYVWNRTLMQAS LDPSVTHLMGLFEPGDMKYE IHRDSTLDPSLMEMTEALR LLSRNPRGFFLFVEGGRIDH GHESRAYRALTETIMFDDA IERAGQLTSEEDTSLVTAD HSHVFSFGGYPLRGSSIFGL APGKARDRKAYTVLLYGNP GYVLKDGARPDVTESESGSP EYRQSAVPLDEETHAGEDV A
Specificity	Recombinant fusion protein containing a sequence corresponding to amino acids 260-460 of human Placental alkaline phosphatase (PLAP) (NP_001623.3).

ADDITIONAL INFORMATION

Note **STRICTLY FOR FURTHER SCIENTIFIC RESEARCH USE ONLY (RUO). MUST NOT TO BE USED IN DIAGNOSTIC OR THERAPEUTIC APPLICATIONS.**



Immunoprecipitation analysis of 200 Mu g extracts of HeLa cells, using 3 Mu g Placental alkaline phosphatase (PLAP) antibody (STJ11104336). Western blot was performed from the immunoprecipitate using Placental alkaline phosphatase (PLAP) antibody (STJ11104336) at a dilution of 1:1000.



Western blot analysis of lysates from HeLa cells, using Placental alkaline phosphatase (PLAP) Rabbit polyclonal antibody (STJ11104336) at 1:1000 dilution. Secondary antibody: HRP Goat Anti-Rabbit IgG (H+L) (STJS000856) at 1:10000 dilution. Lysates/proteins: 25 Mu g per lane. Blocking buffer: 3% nonfat dry milk in TBST. Detection: ECL Basic Kit. Exposure time: 1s.