

## Anti-CSTB antibody (1-98) (STJ11104309)

### GENERAL INFORMATION

|               |                    |
|---------------|--------------------|
| Product Type  | Primary antibodies |
| Applications  | WB/IHC-P/ELISA     |
| Host / Source | Rabbit             |
| Reactivity    | Human              |

### PRODUCT PROPERTIES

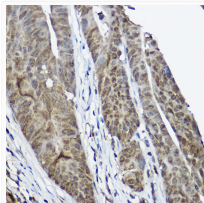
|                     |  |
|---------------------|--|
| Clonality           | Polyclonal   |
| Concentration       | Lot specific   |
| Conjugation         | Unconjugated   |
| Purification        | Affinity purification  |
| Dilution Range      | WB:1:500-1:2000<br>IHC-P:1:50-1:200<br>ELISA:Recommended starting concentration is 1 Mu g/mL. Please optimize the concentration based on your specific assay requirements. |
| Formulation         | PBS with 0.02% Sodium Azide, 50% Glycerol, pH 7.3.   |
| Isotype             | IgG  |
| Molecular Weight    | Protein Mw: 11kDa<br>Observed Mw: Refer to figures   |
| Storage Instruction | Store at -20°C for up to 1 year from the date of receipt, and avoid repeat freeze-thaw cycles.   |

### TARGET INFORMATION

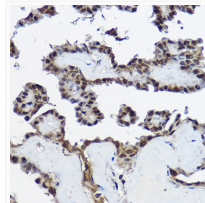
|                    |   |
|--------------------|---|
| Gene ID            | <a href="#">1476</a>  |
| Gene Symbol        | <a href="#">CSTB</a>  |
| UniProt ID         | <a href="#">CYTB_HUMAN</a>  |
| Immunogen Region   | 1-98  |
| Immunogen Sequence | MMCGAPSATQPATAETQHIA DQVRSQLEEKENKKFPVFKA VSFKSQVVAGTNYFIKVVHG<br>DEDFVHLRVFQSLPHENKPL TLSNYQTNKAKHDELTYF       |
| Specificity        | Recombinant fusion protein containing a sequence corresponding to amino acids 1-98 of human CSTB (NP_000091.1). |

### ADDITIONAL INFORMATION

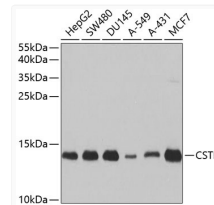
Note **STRICTLY FOR FURTHER SCIENTIFIC RESEARCH USE ONLY (RUO). MUST NOT TO BE USED IN DIAGNOSTIC OR THERAPEUTIC APPLICATIONS.**



Immunohistochemistry analysis of CSTB in paraffin-embedded human colon carcinoma using CSTB Rabbit polyclonal antibody (STJ11104309) at dilution of 1:100 (40x lens). Perform high pressure antigen retrieval with 10 mM citrate buffer pH 6.0 before commencing with immunohistochemistry staining protocol.



Immunohistochemistry analysis of CSTB in paraffin-embedded human thyroid cancer using CSTB Rabbit polyclonal antibody (STJ11104309) at dilution of 1:100 (40x lens). Perform high pressure antigen retrieval with 10 mM citrate buffer pH 6.0 before commencing with immunohistochemistry staining protocol.



Western blot analysis of various lysates using CSTB Rabbit polyclonal antibody (STJ11104309) at 1:1000 dilution. Secondary antibody: HRP Goat Anti-Rabbit IgG (H+L) (STJS000856) at 1:10000 dilution. Lysates/proteins: 25 Mu g per lane. Blocking buffer: 3% nonfat dry milk in TBST. Detection: ECL Basic Kit. Exposure time: 10s.