

Anti-CNP antibody (152-421) (STJ11104302)

GENERAL INFORMATION

Product Type	Primary antibodies
Applications	WB/IHC-P/ELISA
Host / Source	Rabbit
Reactivity	Human/Mouse/Rat

PRODUCT PROPERTIES

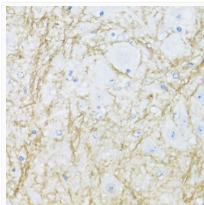
Clonality	Polyclonal
Concentration	Lot specific
Conjugation	Unconjugated
Purification	Affinity purification
Dilution Range	WB:1:500-1:2000 IHC-P:1:50-1:200 ELISA:Recommended starting concentration is 1 Mu g/mL. Please optimize the concentration based on your specific assay requirements.
Formulation	PBS with 0.02% Sodium Azide, 50% Glycerol, pH 7.3.
Isotype	IgG
Molecular Weight	Protein Mw: 48kDa Observed Mw: Refer to figures
Storage Instruction	Store at -20°C for up to 1 year from the date of receipt, and avoid repeat freeze-thaw cycles.

TARGET INFORMATION

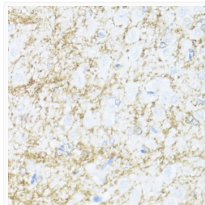
Gene ID	1267
Gene Symbol	CNP
UniProt ID	CN37_HUMAN
Immunogen Region	152-421
Immunogen Sequence	TAWRLDCAQLKEKNQWQLSA DDLKCLKPGLEKDFLPLYFG WFLTKKSSETLRKAGQVFLE ELGNHKAFAKFKELRQFVPGDE PREKMDLVTYFGKRPPGVLH CTTKFCDYGKAPGAEYYAQQ DVLKKSYSKAFALTISALFV TPKTTGARVELSEQQQLWLP SDVDKLSPTDNLPRGSAHI TLGCAADVEAVQTGLDLLEI LRQEKGGSRGEEVGELSRGK LYSLGNGRWMLTLAKNMEV
Specificity	Recombinant fusion protein containing a sequence corresponding to amino acids 152-421 of human CNPase (NP_149124.3).

ADDITIONAL INFORMATION

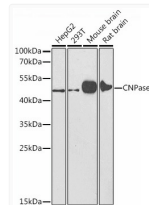
Note STRICTLY FOR FURTHER SCIENTIFIC RESEARCH USE ONLY (RUO). MUST NOT TO BE USED IN DIAGNOSTIC OR THERAPEUTIC APPLICATIONS.



Immunohistochemistry analysis of CNPase in paraffin-embedded mouse spinal cord using CNPase Rabbit polyclonal antibody (STJ11104302) at dilution of 1:100 (40x lens). Perform microwave antigen retrieval with 10 mM PBS buffer pH 7.2 before commencing with immunohistochemistry staining protocol.



Immunohistochemistry analysis of CNPase in paraffin-embedded rat brain using CNPase Rabbit polyclonal antibody (STJ11104302) at dilution of 1:100 (40x lens). Perform microwave antigen retrieval with 10 mM PBS buffer pH 7.2 before commencing with immunohistochemistry staining protocol.



Western blot analysis of various lysates using CNPase Rabbit polyclonal antibody (STJ11104302) at 1:1000 dilution. Secondary antibody: HRP Goat Anti-Rabbit IgG (H+L) (STJS000856) at 1:10000 dilution. Lysates/proteins: 25 Mu g per lane. Blocking buffer: 3% nonfat dry milk in TBST. Detection: ECL Enhanced Kit. Exposure time: 15s.