

## Anti-STRAP antibody (1-350) (STJ11104299)

### GENERAL INFORMATION

Product Type	Primary antibodies
Applications	WB/IF/ICC/IP/ELISA
Host / Source	Rabbit
Reactivity	Human/Mouse/Rat

### PRODUCT PROPERTIES

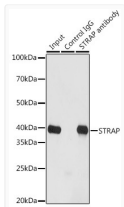
Clonality	Polyclonal
Concentration	Lot specific
Conjugation	Unconjugated
Purification	Affinity purification
Dilution Range	WB:1:500-1:2000 IF/CC:1:50-1:200 IP:0.5 Mu g-4 Mu g antibody for 200 Mu g-400 Mu g extracts of whole cells ELISA:Recommended starting concentration is 1 Mu g/mL. Please optimize the concentration based on your specific assay requirements
Formulation	PBS with 0.02% Sodium Azide, 50% Glycerol, pH 7.3.
Isotype	IgG
Molecular Weight	Protein Mw: 38kDa Observed Mw: 39kDa
Storage Instruction	Store at -20°C for up to 1 year from the date of receipt, and avoid repeat freeze-thaw cycles.

### TARGET INFORMATION

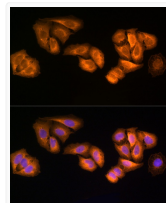
Gene ID	<a href="#">11171</a>
Gene Symbol	<a href="#">STRAP</a>
UniProt ID	<a href="#">STRAP_HUMAN</a>
Immunogen Region	1-350
Immunogen Sequence	MAMRQTPLTCSGHTRPVVDL AFSGITPYGYFLISACKDGK PMLRQGDGTGDWIGTFLGHKG AVWGATLNKDATKAATAAAD FTAKVWDAVSGDELMTLAHK HIVKTVDFDQDSNYLLTGGQ DKLLRIYDLNKPEAEPKEIS GHTSGIKKALWCSEDKQILS ADDKTVRLWDHATMTEVKSL NFNMSVSSMEYIPEGEILVI TYGRSIAFHSAVSLDPIKSF EAPATINSASLHPEKEFLV
Specificity	Recombinant fusion protein containing a sequence corresponding to amino acids 1-350 of human STRAP (NP_009109.3).

### ADDITIONAL INFORMATION

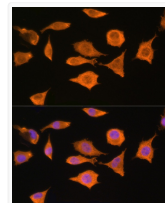
Note **STRICTLY FOR FURTHER SCIENTIFIC RESEARCH USE ONLY (RUO). MUST NOT TO BE USED IN DIAGNOSTIC OR THERAPEUTIC APPLICATIONS.**



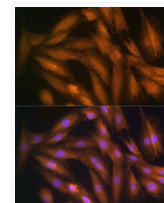
Immunoprecipitation analysis of 200 Mu g extracts of HeLa cells using 3 Mu g STRAP antibody (STJ11104299). Western blot was performed from the immunoprecipitate using STRAP antibody (STJ11104299) at a dilution of 1:1000.



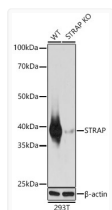
Immunofluorescence analysis of U2OS cells using STRAP Rabbit polyclonal antibody (STJ11104299) at dilution of 100 (40x lens). Secondary antibody: Cy3 Goat Anti-Rabbit IgG (H+L) at 1:500 dilution. Blue: DAPI for nuclear staining.



Immunofluorescence analysis of L929 cells using STRAP Rabbit polyclonal antibody (STJ11104299) at dilution of 100 (40x lens). Secondary antibody: Cy3 Goat Anti-Rabbit IgG (H+L) at 1:500 dilution. Blue: DAPI for nuclear staining.



Immunofluorescence analysis of H9C2 cells using STRAP Rabbit polyclonal antibody (STJ11104299) at dilution of 100 (40x lens). Secondary antibody: Cy3 Goat Anti-Rabbit IgG (H+L) at 1:500 dilution. Blue: DAPI for nuclear staining.



Western blot analysis of lysates from wild type (WT) and STRAP knockout (KO) HeLa cells, using STRAP Rabbit polyclonal antibody (STJ11104299) at 1:1000 dilution. Secondary antibody: HRP Goat Anti-Rabbit IgG (H+L) (STJS000856) at 1:10000 dilution. Lysates/proteins: 25 Mu g per lane. Blocking buffer: 3% nonfat dry milk in TBST. Detection: ECL Basic Kit. Exposure time: 1s.