

Anti-HIBADH antibody (37-336) (STJ11104297)

GENERAL INFORMATION

Product Type	Primary antibodies
Applications	WB/IHC-P/IF/ICC/ELISA
Host / Source	Rabbit
Reactivity	Human/Mouse/Rat

PRODUCT PROPERTIES

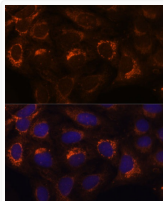
Clonality	Polyclonal
Concentration	Lot specific
Conjugation	Unconjugated
Purification	Affinity purification
Dilution Range	WB:1:1000-1:5000 IHC-P:1:50-1:200 IF/ICC:1:50-1:200 ELISA:Recommended starting concentration is 1 µg/mL. Please optimize the concentration based on your specific assay requirements.
Formulation	PBS with 0.05% Proclin300, 50% Glycerol, pH 7.3.
Isotype	IgG
Molecular Weight	Protein Mw: 35kDa Observed Mw: 35kDa
Storage Instruction	Store at -20°C for up to 1 year from the date of receipt, and avoid repeat freeze-thaw cycles.

TARGET INFORMATION

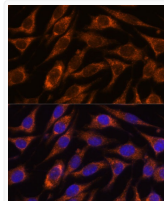
Gene ID	11112
Gene Symbol	HIBADH
UniProt ID	3HIDH_HUMAN
Immunogen Region	37-336
Immunogen Sequence	ASKTPVGFIGLGNMGNPMAK NLMKHGYPLIYDVFDPACK EFQDAGEQVVSSPADVAEKA DRIITMLPTSINAIEAYSGA NGILKKVKKGSLLIDSSTID PAVSKELAKEVEKMGAVFMD APVSGGVGAARSGNLTFMVG GVEDEFAAAQELLGCMGSNV VYCGAVGTGQAAKICNNMLL AISMIGTAEAMNLGIRLGLD PKLLAKILNMSSGRWCWSSDT YNPVPGVMDGVPSANNYQG
Specificity	Recombinant fusion protein containing a sequence corresponding to amino acids 37-336 of human HIBADH (NP_689953.1).

ADDITIONAL INFORMATION

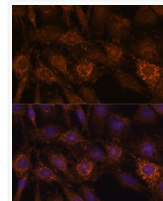
Note STRICTLY FOR FURTHER SCIENTIFIC RESEARCH USE ONLY (RUO). MUST NOT TO BE USED IN DIAGNOSTIC OR THERAPEUTIC APPLICATIONS.



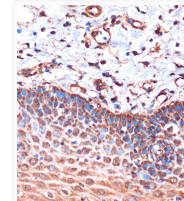
Immunofluorescence analysis of U-2 OS cells using HIBADH antibody (STJ11104297) at dilution of 1:100. Blue: DAPI for nuclear staining.



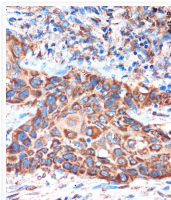
Immunofluorescence analysis of L929 cells using HIBADH antibody (STJ11104297) at dilution of 1:100. Blue: DAPI for nuclear staining.



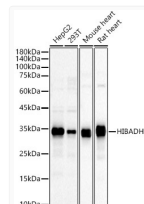
Immunofluorescence analysis of C6 cells using HIBADH antibody (STJ11104297) at dilution of 1:100. Blue: DAPI for nuclear staining.



Immunohistochemistry analysis of paraffin-embedded Human esophageal using HIBADH Rabbit polyclonal antibody (STJ11104297) at dilution of 1:100 (40x lens). Perform microwave antigen retrieval with 10 mM PBS buffer pH 7.2 before commencing with immunohistochemistry staining protocol.



Immunohistochemistry analysis of paraffin-embedded Human lung cancer using HIBADH Rabbit polyclonal antibody (STJ11104297) at dilution of 1:100 (40x lens). Perform microwave antigen retrieval with 10 mM PBS buffer pH 7.2 before commencing with immunohistochemistry staining protocol.



Western blot analysis of various lysates, using HIBADH Rabbit polyclonal antibody (STJ11104297) at 1:2000 dilution. Secondary antibody: HRP Goat Anti-Rabbit IgG (H+L) (STJS000856) at 1:10000 dilution. Lysates/proteins: 25 µg per lane. Blocking buffer: 3% nonfat dry milk in TBST. Detection: ECL Basic Kit. Exposure time: 30s.