

Anti-UBE2C antibody (1-179) (STJ11104295)

GENERAL INFORMATION

Product Type	Primary antibodies
Applications	WB/ELISA
Host / Source	Rabbit
Reactivity	Human

PRODUCT PROPERTIES

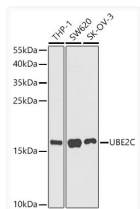
Clonality	Polyclonal
Concentration	Lot specific
Conjugation	Unconjugated
Purification	Affinity purification
Dilution Range	WB:1:500-1:1000 ELISA:Recommended starting concentration is 1 Mu g/mL. Please optimize the concentration based on your specific assay requirements.
Formulation	PBS with 0.02% Sodium Azide, 50% Glycerol, pH 7.3.
Isotype	IgG
Molecular Weight	Protein Mw: 20kDa Observed Mw: 18kDa
Storage Instruction	Store at -20°C for up to 1 year from the date of receipt, and avoid repeat freeze-thaw cycles.

TARGET INFORMATION

Gene ID	11065
Gene Symbol	UBE2C
UniProt ID	UBE2C_HUMAN
Immunogen Region	1-179
Immunogen Sequence	MASQNRDPAATSVAARKGA EPSGGAARGPVGKRLQQELM TLMMSGDKGISAFPESDNLF KWVGTIHGAAGTVYEDLRYK LSLEFPSGYPYNAPT VKFLT PCYHPNVDVTQGNICLDILKE KWSALYDVRTILLSIQSLLG EPNIDSPLNTHAAELWKNPT AFKKYLQETYSKQVTSQEP
Specificity	Recombinant Protein corresponding to a sequence within amino acids 1-179 of human UBE2C (NP_008950.1).

ADDITIONAL INFORMATION

Note STRICTLY FOR FURTHER SCIENTIFIC RESEARCH USE ONLY (RUO). MUST NOT TO BE USED IN DIAGNOSTIC OR THERAPEUTIC APPLICATIONS.



Western blot analysis of various lysates using UBE2C Rabbit polyclonal antibody (STJ11104295) at 1:1000 dilution. Secondary antibody: HRP Goat Anti-Rabbit IgG (H+L) (STJS000856) at 1:10000 dilution. Lysates/ proteins: 25 Mu g per lane. Blocking buffer: 3 % nonfat dry milk in TBST. Detection: ECL Basic Kit. Exposure time: 90s.