

## Anti-Phospho-POLR2A-T4 antibody (STJ11104227)

### GENERAL INFORMATION

Product Type	Primary antibodies
Applications	WB/IP/ELISA/ChIP
Host / Source	Rabbit
Reactivity	Human/Mouse/Rat

### PRODUCT PROPERTIES

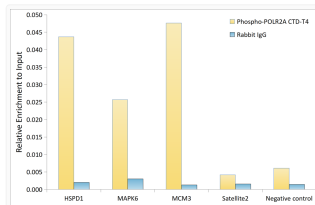
Clonality	Polyclonal
Concentration	Lot specific
Conjugation	Unconjugated
Purification	Affinity purification
Dilution Range	WB:1:500-1:1000 IP:0.5 Mu g-4 Mu g antibody for 200 Mu g-400 Mu g extracts of whole cells ELISA:Recommended starting concentration is 1 Mu g/mL. Please optimize the concentration based on your specific assay requirements. ChIP:5 Mu g anti
Formulation	PBS with 0.05% Proclin300, 50% Glycerol, pH 7.3.
Isotype	IgG
Molecular Weight	Protein Mw: 217kDa Observed Mw: 250kDa
Storage Instruction	Store at -20°C for up to 1 year from the date of receipt, and avoid repeat freeze-thaw cycles.

### TARGET INFORMATION

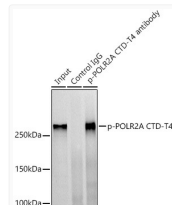
Gene ID	<a href="#">5430</a>
Gene Symbol	<a href="#">POLR2A</a>
UniProt ID	<a href="#">RPB1_HUMAN</a>
Specificity	A phospho specific peptide corresponding to residues surrounding T4 of human POLR2A CTD repeat YSPTSPS.

### ADDITIONAL INFORMATION

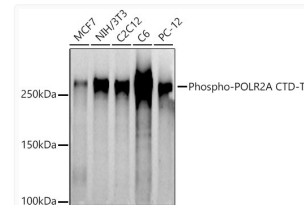
Note STRICTLY FOR FURTHER SCIENTIFIC RESEARCH USE ONLY (RUO). MUST NOT TO BE USED IN DIAGNOSTIC OR THERAPEUTIC APPLICATIONS.



Chromatin immunoprecipitation analysis of extracts of 293T cells, using Phospho-POLR2A CTD-T4 antibody (STJ11104227) and rabbit IgG. The amount of immunoprecipitated DNA was checked by quantitative PCR. Histogram was constructed by the ratios of the immunoprecipitated DNA to the input.



Immunoprecipitation analysis of 300 Mu g extracts of C6 cells using 3 Mu g Phospho-POLR2A CTD-T4 antibody (STJ11104227). Western blot was performed from the immunoprecipitate using Phospho-POLR2A (Thr4) antibody (STJ11104227) at a dilution of 1:1000.



Western blot analysis of various lysates using Phospho-POLR2A CTD-T4 Rabbit polyclonal antibody (STJ11104227) at 1:1000 dilution. Secondary antibody: HRP Goat Anti-Rabbit IgG (H+L) (STJS000856) at 1:10000 dilution. Lysates/proteins: 25 Mu g per lane. Blocking buffer: 3% nonfat dry milk in TBST. Detection: ECL Basic Kit. Exposure time: 90s.