

Anti-SYPL1 antibody (50-120) (STJ11104226)

GENERAL INFORMATION

Product Type	Primary antibodies
Applications	IF/ICC/ELISA
Host / Source	Rabbit
Reactivity	Human

PRODUCT PROPERTIES

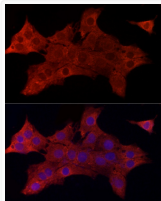
Clonality	Polyclonal
Concentration	Lot specific
Conjugation	Unconjugated
Purification	Affinity purification
Dilution Range	IF/ICC:1:50-1:200 ELISA:Recommended starting concentration is 1 μ g/mL. Please optimize the concentration based on your specific assay requirements.
Formulation	PBS with 0.05% Proclin300, 50% Glycerol, pH 7.3.
Isotype	IgG
Molecular Weight	Protein Mw: 29kDa Observed Mw: Refer to figures
Storage Instruction	Store at -20°C for up to 1 year from the date of receipt, and avoid repeat freeze-thaw cycles.

TARGET INFORMATION

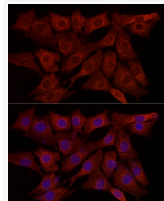
Gene ID	6856
Gene Symbol	SYPL1
UniProt ID	SYPL1_HUMAN
Immunogen Region	50-120
Immunogen Sequence	TCGGFKGQTEIQVNCPPAVT ENKTVTATFGYPFRLNEASF QPPPGVNICDVNWKDYVLIG DYSSSAQFYVT
Specificity	Recombinant fusion protein containing a sequence corresponding to amino acids 50-120 of human SYPL1 (NP_006745.1).

ADDITIONAL INFORMATION

Note STRICTLY FOR FURTHER SCIENTIFIC RESEARCH USE ONLY (RUO). MUST NOT TO BE USED IN DIAGNOSTIC OR THERAPEUTIC APPLICATIONS.



Immunofluorescence analysis of PC-12 cells using SYPL1 Rabbit polyclonal antibody (STJ11104226) at dilution of 1:50 (40x lens). Blue: DAPI for nuclear staining.



Immunofluorescence analysis of NIH/3T3 cells using SYPL1 Rabbit polyclonal antibody (STJ11104226) at dilution of 1:50 (40x lens). Blue: DAPI for nuclear staining.