

Anti-NFE2L2 antibody (243-400) [S4220RM] (STJ11104220)

GENERAL INFORMATION

Product Type	Primary antibodies
Applications	WB/ELISA
Host / Source	Rabbit
Reactivity	Human/Mouse/Rat

PRODUCT PROPERTIES

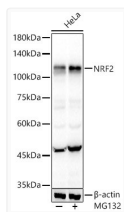
Clonality	Monoclonal
Concentration	Lot specific
Conjugation	Unconjugated
Purification	Affinity purification
Dilution Range	WB:1:1000-1:4000 ELISA:Recommended starting concentration is 1 Mu g/mL. Please optimize the concentration based on your specific assay requirements.
Formulation	PBS with 0.09% Sodium Azide, 0.05% BSA, 50% Glycerol, pH7.3.
Isotype	IgG
Molecular Weight	Protein Mw: 68kDa Observed Mw: 97-100kDa
Storage Instruction	Store at -20°C for up to 1 year from the date of receipt, and avoid repeat freeze-thaw cycles.

TARGET INFORMATION

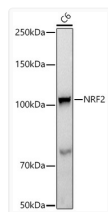
Gene ID	4780
Gene Symbol	NFE2L2
UniProt ID	NF2L2_HUMAN
Immunogen Region	243-400
Immunogen Sequence	SPHFLNAFEDSFSSILSTED PNQLTVNSLNSDATVNTDFG DEFYSAFIAEPSISNSMPSP ATLSHLSSELLNGPIDVSDL SLCKAFNQNHPESTAEFNDS DSGISLNTSPSVASPEHSVE SSSYGDTLLGLSDSEVEELD SAPGSVKQNGPKTPVHSS
Specificity	Recombinant fusion protein containing a sequence corresponding to amino acids 243-400 of human NRF2 (NP_006155.2).

ADDITIONAL INFORMATION

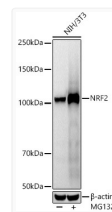
Note STRICTLY FOR FURTHER SCIENTIFIC RESEARCH USE ONLY (RUO). MUST NOT TO BE USED IN DIAGNOSTIC OR THERAPEUTIC APPLICATIONS.



Western blot analysis lysates from HeLa, using NRF2 antibody (STJ11104220) at 1:1000 dilution. HeLa cells were treated by MG132 (50 Mu M) at 37 °C for 90 minutes. Secondary antibody: HRP Goat Anti-Rabbit IgG (H+L) (STJS000856) at 1:10000 dilution. Lysates/proteins: 25 Mu g per lane. Blocking buffer: 3% nonfat dry milk in TBST. Detection: ECL Basic Kit. Exposure time: 30s.



Western blot analysis of extracts of C6 cells, using NRF2 antibody (STJ11104220) at 1:1000 dilution. Secondary antibody: HRP Goat Anti-Rabbit IgG (H+L) (STJS000856) at 1:10000 dilution. Lysates/proteins: 25 Mu g per lane. Blocking buffer: 3% nonfat dry milk in TBST. Detection: ECL Basic Kit. Exposure time: 30s.



Western blot analysis of extracts of NIH/3T3 cells, using NRF2 antibody (STJ11104220) at 1:1000 dilution. NIH/3T3 cells were treated by MG132 (50 Mu M) at 37 °C for 90 minutes. Secondary antibody: HRP Goat Anti-Rabbit IgG (H+L) (STJS000856) at 1:10000 dilution. Lysates/proteins: 25 Mu g per lane. Blocking buffer: 3% nonfat dry milk in TBST. Detection: ECL Basic Kit. Exposure time: 30s.