

## Anti-ULBP1 antibody (1-100) [S4210RM] (STJ11104210)

### GENERAL INFORMATION

Product Type	Primary antibodies
Applications	WB/ELISA
Host / Source	Rabbit
Reactivity	Human/Mouse

### PRODUCT PROPERTIES

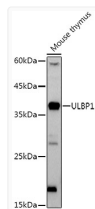
Clonality	Monoclonal
Concentration	Lot specific
Conjugation	Unconjugated
Purification	Affinity purification
Dilution Range	WB:1:500-1:1000 ELISA:Recommended starting concentration is 1 Mu g/mL. Please optimize the concentration based on your specific assay requirements.
Formulation	PBS with 0.02% Sodium Azide, 0.05% BSA, 50% Glycerol, pH 7.3.
Isotype	IgG
Molecular Weight	Protein Mw: 28kDa Observed Mw: 36kDa
Storage Instruction	Store at -20°C for up to 1 year from the date of receipt, and avoid repeat freeze-thaw cycles.

### TARGET INFORMATION

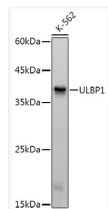
Gene ID	<a href="#">80329</a>
Gene Symbol	<a href="#">ULBP1</a>
UniProt ID	<a href="#">ULBP1_HUMAN</a>
Immunogen Region	1-100
Immunogen Sequence	MAAAASPALLCLPLHLLS GWSRAGWVDTHCLCYDFIIT PKSRPEPQWCEVQGLVDERP FLHYDCVNHKAKAFASLGKK VNVTKTWEEQTETLRDVVDF
Specificity	Recombinant fusion protein containing a sequence corresponding to amino acids 1-100 of human ULBP1 (NP_079494.1).

### ADDITIONAL INFORMATION

Note **STRICTLY FOR FURTHER SCIENTIFIC RESEARCH USE ONLY (RUO). MUST NOT TO BE USED IN DIAGNOSTIC OR THERAPEUTIC APPLICATIONS.**



Western blot analysis of lysates from Mouse thymus, using ULBP1 Rabbit monoclonal antibody (STJ11104210) at 1:1000 dilution. Secondary antibody: HRP Goat Anti-Rabbit IgG (H+L) (STJS000856) at 1:10000 dilution. Lysates/proteins: 25 Mu g per lane. Blocking buffer: 3% nonfat dry milk in TBST. Detection: ECL Basic Kit. Exposure time: 90s.



Western blot analysis of lysates from K-562 cells, using ULBP1 Rabbit monoclonal antibody (STJ11104210) at 1:1000 dilution. Secondary antibody: HRP Goat Anti-Rabbit IgG (H+L) (STJS000856) at 1:10000 dilution. Lysates/proteins: 25 Mu g per lane. Blocking buffer: 3% nonfat dry milk in TBST. Detection: ECL Basic Kit. Exposure time: 1s.