

Anti-HAUS7 antibody (150-285) [S4206RM] (STJ11104206)

GENERAL INFORMATION

Product Type	Primary antibodies
Applications	WB/ELISA
Host / Source	Rabbit
Reactivity	Human

PRODUCT PROPERTIES

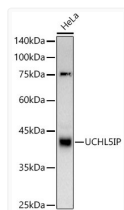
Clonality	Monoclonal
Concentration	Lot specific
Conjugation	Unconjugated
Purification	Affinity purification
Dilution Range	WB:1:500-1:1000 ELISA:Recommended starting concentration is 1 µg/mL. Please optimize the concentration based on your specific assay requirements.
Formulation	PBS with 0.02% Sodium Azide, 0.05% BSA, 50% Glycerol, pH 7.3.
Isotype	IgG
Molecular Weight	Protein Mw: 40kDa Observed Mw: 40kDa
Storage Instruction	Store at -20°C for up to 1 year from the date of receipt, and avoid repeat freeze-thaw cycles.

TARGET INFORMATION

Gene ID	55559
Gene Symbol	HAUS7
UniProt ID	HAUS7_HUMAN
Immunogen Region	150-285
Immunogen Sequence	LMEHFEDTREKNEALLGELF SSPHLQMLLNPECDPWPLDM QPLLNKQSDDWQWASASAKS EEEEKLAELARQLQESAAKL HALRTEYFAQHEQGAAAGAA DISTLDQKLRVTSDFHQLI LAFLQVYDDELGECCQ
Specificity	Recombinant fusion protein containing a sequence corresponding to amino acids 150-285 of human UCHL5IP (NP_001372411.1).

ADDITIONAL INFORMATION

Note STRICTLY FOR FURTHER SCIENTIFIC RESEARCH USE ONLY (RUO). MUST NOT TO BE USED IN DIAGNOSTIC OR THERAPEUTIC APPLICATIONS.



Western blot analysis of lysates from HeLa cells, using UCHL5IP Rabbit monoclonal antibody (STJ11104206) at 1:1000 dilution. Secondary antibody: HRP Goat Anti-Rabbit IgG (H+L) (STJS000856) at 1:10000 dilution. Lysates/proteins: 25 µg per lane. Blocking buffer: 3% nonfat dry milk in TBST. Detection: ECL Basic Kit. Exposure time: 120s.