

Anti-TIMM44 antibody (10-240) [S4197RM] (STJ11104197)

GENERAL INFORMATION

Product Type	Primary antibodies
Applications	WB/ELISA
Host / Source	Rabbit
Reactivity	Human/Rat

PRODUCT PROPERTIES

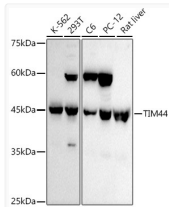
Clonality	Monoclonal
Concentration	Lot specific
Conjugation	Unconjugated
Purification	Affinity purification
Dilution Range	WB:1:500-1:1000 ELISA:Recommended starting concentration is 1 Mu g/mL. Please optimize the concentration based on your specific assay requirements.
Formulation	PBS with 0.02% Sodium Azide, 0.05% BSA, 50% Glycerol, pH 7.3.
Isotype	IgG
Molecular Weight	Protein Mw: 51kDa Observed Mw: 45kDa
Storage Instruction	Store at-20°C for up to 1 year from the date of receipt, and avoid repeat freeze-thaw cycles.

TARGET INFORMATION

Gene ID	10469
Gene Symbol	TIMM44
UniProt ID	TIM44_HUMAN
Immunogen Region	10-240
Immunogen Sequence	WCRCPRRCLGSGIQFLSSHNLPHGSTYQMRRPGGELPLSKSYSSGNRKGFLSGLLDNVKQ ELAKNKEMKESIKKFRDEAR RLEESDVLQEAARRKYKTIES ETVRTSEVLRKKLGELTGTV KESLHEVSKSDLGRKIKEGV EEAAKTAKQSAESVSKGGEK LGRTAAFRALSQGVESVKKE IDDSVLGQTPYRRPQRLRK RTEFAGDKFKEEKVFEPNEE ALGVVLHKDSK
Specificity	Recombinant fusion protein containing a sequence corresponding to amino acids 10-240 of human TIM44 (NP_006342.2).

ADDITIONAL INFORMATION

Note **STRICTLY FOR FURTHER SCIENTIFIC RESEARCH USE ONLY (RUO). MUST NOT TO BE USED IN DIAGNOSTIC OR THERAPEUTIC APPLICATIONS.**



Western blot analysis of various lysates using TIM44 Rabbit monoclonal antibody (STJ11104197) at 1:1000 dilution. Secondary antibody: HRP Goat Anti-Rabbit IgG (H+L) (STJS000856) at 1:10000 dilution. Lysates/proteins: 25 Mu g per lane. Blocking buffer: 3% nonfat dry milk in TBST. Detection: ECL Basic Kit. Exposure time: 90s.