

## Anti-HSD17B13 antibody (30-211) [S4159RM] (STJ11104159)

### GENERAL INFORMATION

Product Type	Primary antibodies
Applications	WB/ELISA
Host / Source	Rabbit
Reactivity	Human

### PRODUCT PROPERTIES

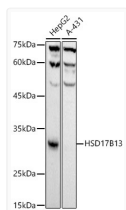
Clonality	Monoclonal
Concentration	Lot specific
Conjugation	Unconjugated
Purification	Affinity purification
Dilution Range	WB:1:500-1:1000 ELISA:Recommended starting concentration is 1 Mu g/mL. Please optimize the concentration based on your specific assay requirements.
Formulation	PBS with 0.05% Proclin300, 0.05% BSA, 50% Glycerol, pH 7.3.
Isotype	IgG
Molecular Weight	Protein Mw: 34kDa Observed Mw: 34kDa
Storage Instruction	Store at -20°C for up to 1 year from the date of receipt, and avoid repeat freeze-thaw cycles.

### TARGET INFORMATION

Gene ID	<a href="#">345275</a>
Gene Symbol	<a href="#">HSD17B13</a>
UniProt ID	<a href="#">DHB13_HUMAN</a>
Immunogen Region	30-211
Immunogen Sequence	RRKSVAGEIVLITGAGHGIG RQTTYEFAKRQSI LVLWDIN KRGVEETA AECRKLGVTAHA YVDCSNREEIYRSLNQVKK EVDVTVVNNAGTVYPADL LSTKDEEITKTFEVNLGHF WITKALLPMMERNHGHIVT VASVCGHEGIPYLIPYCSSK FAAVGFHTRGLTSELQALGKT GI
Specificity	Recombinant fusion protein containing a sequence corresponding to amino acids 30-211 of human HSD17B13 (NP_835236.2).

### ADDITIONAL INFORMATION

Note STRICTLY FOR FURTHER SCIENTIFIC RESEARCH USE ONLY (RUO). MUST NOT TO BE USED IN DIAGNOSTIC OR THERAPEUTIC APPLICATIONS.



Western blot analysis of extracts of various cell lines, using HSD17B13 antibody (STJ11104159) at 1:1000 dilution. Secondary antibody: HRP Goat Anti-Rabbit IgG (H+L) (STJS000856) at 1:10000 dilution. Lysates/proteins: 25 Mu g per lane. Blocking buffer: 3% nonfat dry milk in TBST. Detection: ECL Basic Kit. Exposure time: 1s.