

Anti-Coenzyme NAD antibody [S4155RM] (STJ11104155)

GENERAL INFORMATION

Product Type	Primary antibodies
Applications	DB/ELISA
Host / Source	Rabbit
Reactivity	Species Independent

PRODUCT PROPERTIES

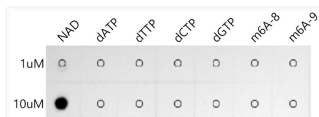
Clonality	Monoclonal
Concentration	Lot specific
Conjugation	Unconjugated
Purification	Affinity purification
Dilution Range	DB:1:500-1:1000 ELISA:Recommended starting concentration is 1 Mu g/mL. Please optimize the concentration based on your specific assay requirements.
Formulation	PBS with 0.05% Proclin300, 0.05% BSA, 50% Glycerol, pH 7.3.
Isotype	IgG
Molecular Weight	Refer to figures
Storage Instruction	Store at -20°C for up to 1 year from the date of receipt, and avoid repeat freeze-thaw cycles.

TARGET INFORMATION

Specificity	NAD
-------------	-----

ADDITIONAL INFORMATION

Note STRICTLY FOR FURTHER SCIENTIFIC RESEARCH USE ONLY (RUO). MUST NOT TO BE USED IN DIAGNOSTIC OR THERAPEUTIC APPLICATIONS.



The Coenzyme NAD Rabbit monoclonal antibody (STJ11104155) are tested in Dot Blot against NAD and deoxynucleotide, adenosine. NA NA m6A 8- ATAACTGG-m6A-CCGAATGG NA NA m6A 9- ATAACTGGACCGAATGG