

## Anti-LORICRIN antibody (1-100) (STJ11104151)

### GENERAL INFORMATION

Product Type	Primary antibodies
Applications	WB/IF/ICC/ELISA
Host / Source	Rabbit
Reactivity	Human/Mouse/Rat

### PRODUCT PROPERTIES

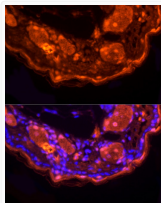
Clonality	Polyclonal
Concentration	Lot specific
Conjugation	Unconjugated
Purification	Affinity purification
Dilution Range	WB:1:500-1:1000 IF/CC:1:50-1:200 ELISA:Recommended starting concentration is 1 $\mu$ g/mL. Please optimize the concentration based on your specific assay requirements.
Formulation	PBS with 0.05% Proclin300, 50% Glycerol, pH 7.3.
Isotype	IgG
Molecular Weight	Protein Mw: 26kDa Observed Mw: 26kDa
Storage Instruction	Store at -20°C for up to 1 year from the date of receipt, and avoid repeat freeze-thaw cycles.

### TARGET INFORMATION

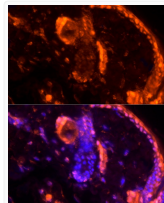
Gene ID	<a href="#">4014</a>
Gene Symbol	<a href="#">LORICRIN</a>
UniProt ID	<a href="#">LORI_HUMAN</a>
Immunogen Region	1-100
Immunogen Sequence	MSYQKKQPTPQPPVDCVKTS GGGGGGGGSGGGGCGFFGGG GSGGGSSGSGCGYSGGGGYS GGGCGGGSSGGGGGGIGGC GGGSGGSVKYSGGGGSSGGG
Specificity	A synthetic peptide corresponding to a sequence within amino acids 1-100 of human LORICRIN (NP_000418.2).

### ADDITIONAL INFORMATION

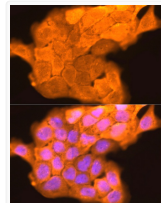
Note STRICTLY FOR FURTHER SCIENTIFIC RESEARCH USE ONLY (RUO). MUST NOT TO BE USED IN DIAGNOSTIC OR THERAPEUTIC APPLICATIONS.



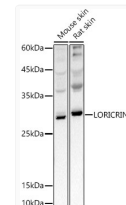
Immunofluorescence analysis of mouse skin using LORICRIN Rabbit polyclonal antibody (STJ11104151) at dilution of 1:200 (40x lens). Blue: DAPI for nuclear staining.



Immunofluorescence analysis of rat skin using LORICRIN Rabbit polyclonal antibody (STJ11104151) at dilution of 1:200 (40x lens). Blue: DAPI for nuclear staining.



Immunofluorescence analysis of A431 cells using LORICRIN Rabbit polyclonal antibody (STJ11104151) at dilution of 1:200 (40x lens). Blue: DAPI for nuclear staining.



Western blot analysis of extracts of various cell lines, using LORICRIN antibody (STJ11104151) at 1:1000 dilution. Secondary antibody: HRP Goat Anti-Rabbit IgG (H+L) (STJS000856) at 1:10000 dilution. Lysates/proteins: 25  $\mu$ g per lane. Blocking buffer: 3% nonfat dry milk in TBST. Detection: ECL Basic Kit. Exposure time: 3s.