

## Anti-NOS3 antibody (1035-1110) [S4147RM] (STJ11104147)

### GENERAL INFORMATION

Product Type	Primary antibodies
Applications	WB/IHC-P/ELISA
Host / Source	Rabbit
Reactivity	Human/Mouse/Rat

### PRODUCT PROPERTIES

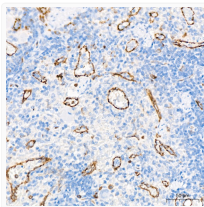
Clonality	Monoclonal
Concentration	Lot specific
Conjugation	Unconjugated
Purification	Affinity purification
Dilution Range	WB:1:1000-1:2000 IHC-P:1:200-1:2000 ELISA:Recommended starting concentration is 1 Mu g/mL. Please optimize the concentration based on your specific assay requirements.
Formulation	PBS with 0.05% Proclin300, 0.05% BSA, 50% Glycerol, pH 7.3.
Isotype	IgG
Molecular Weight	Protein Mw: 133kDa Observed Mw: 148kDa
Storage Instruction	Store at -20°C for up to 1 year from the date of receipt, and avoid repeat freeze-thaw cycles.

### TARGET INFORMATION

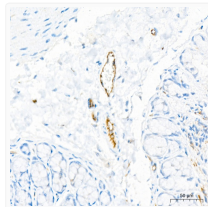
Gene ID	<a href="#">4846</a>
Gene Symbol	<a href="#">NOS3</a>
UniProt ID	<a href="#">NOS3_HUMAN</a>
Immunogen Region	1035-1110
Immunogen Sequence	KGLQPTPMTLVFGCRCSQLD HLYRDEVQNAQQRGVFGRVL TAFSREPDNPKTYVQDILRT ELAAEVHRVLCLEGRH
Specificity	Recombinant fusion protein containing a sequence corresponding to amino acids 1035-1110 of human eNOS (NP_000594.2).

### ADDITIONAL INFORMATION

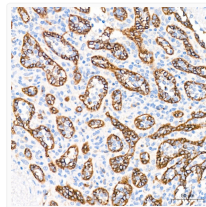
Note STRICTLY FOR FURTHER SCIENTIFIC RESEARCH USE ONLY (RUO). MUST NOT TO BE USED IN DIAGNOSTIC OR THERAPEUTIC APPLICATIONS.



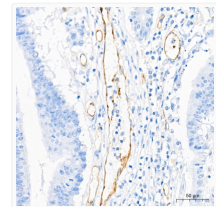
Immunohistochemistry analysis of eNOS in paraffin-embedded rat spleen tissue using eNOS Rabbit monoclonal antibody (STJ11104147) at a dilution of 1:200 (40x lens). High pressure antigen retrieval was performed with 0.01 M citrate buffer (pH 6.0) prior to immunohistochemistry staining.



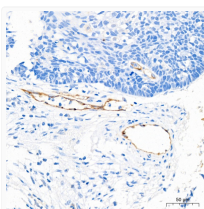
Immunohistochemistry analysis of eNOS in paraffin-embedded rat colon tissue using eNOS Rabbit monoclonal antibody (STJ11104147) at a dilution of 1:200 (40x lens). High pressure antigen retrieval was performed with 0.01 M citrate buffer (pH 6.0) prior to immunohistochemistry staining.



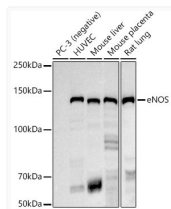
Immunohistochemistry analysis of eNOS in paraffin-embedded human spleen tissue using eNOS Rabbit monoclonal antibody (STJ11104147) at a dilution of 1:200 (40x lens). High pressure antigen retrieval was performed with 0.01 M citrate buffer (pH 6.0) prior to immunohistochemistry staining.



Immunohistochemistry analysis of eNOS in paraffin-embedded human colon carcinoma tissue using eNOS Rabbit monoclonal antibody (STJ11104147) at a dilution of 1:200 (40x lens). High pressure antigen retrieval was performed with 0.01 M citrate buffer (pH 6.0) prior to immunohistochemistry staining.



Immunohistochemistry analysis of eNOS in paraffin-embedded human cervix cancer tissue using eNOS Rabbit monoclonal antibody (STJ11104147) at a dilution of 1:200 (40x lens). High pressure antigen retrieval was performed with 0.01 M citrate buffer (pH 6.0) prior to immunohistochemistry staining.



Western blot analysis of extracts of various cell lines, using eNOS antibody (STJ11104147) at 1:1000 dilution. Secondary antibody: HRP Goat Anti-Rabbit IgG (H+L) (STJS000856) at 1:10000 dilution. Lysates/proteins: 25 Mu g per lane. Blocking buffer: 3% nonfat dry milk in TBST. Detection: ECL Basic Kit. Exposure time: 180s.