

## Anti-MYO19 antibody (450-650) [S4123RM] (STJ11104123)

### GENERAL INFORMATION

Product Type	Primary antibodies
Applications	WB/ELISA
Host / Source	Rabbit
Reactivity	Human/Mouse/Rat/Monkey

### PRODUCT PROPERTIES

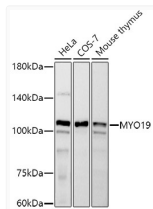
Clonality	Monoclonal
Concentration	Lot specific
Conjugation	Unconjugated
Purification	Affinity purification
Dilution Range	WB:1:500-1:1000 ELISA:Recommended starting concentration is 1 µg/mL. Please optimize the concentration based on your specific assay requirements.
Formulation	PBS with 0.02% Sodium Azide, 0.05% BSA, 50% Glycerol, pH 7.3.
Isotype	IgG
Molecular Weight	Protein Mw: 109kDa Observed Mw: 109kDa
Storage Instruction	Store at -20°C for up to 1 year from the date of receipt, and avoid repeat freeze-thaw cycles.

### TARGET INFORMATION

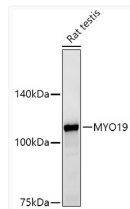
Gene ID	<a href="#">80179</a>
Gene Symbol	<a href="#">MYO19</a>
UniProt ID	<a href="#">MYO19_HUMAN</a>
Immunogen Region	450-650
Immunogen Sequence	QQEYAVEGLEWSFINYQDN QPCLDLIEGSPISICSLINE ECRLNRPSSAAQLQTRieta LAGSPCLGHNKLSREPSFIV VHYAGPVRYHTAGLVEKNKD PIPPELTRLLQQSQDPLLMG LFPTNPKEKTQEEPPGQSRA PVLTVVSKFKASLEQLLQVL HSTTPHYIRCikPNSGQAQ TFLQEEVLSQLEACGLVETIH
Specificity	Recombinant fusion protein containing a sequence corresponding to amino acids 450-650 of human MYO19 (Q96H55).

### ADDITIONAL INFORMATION

Note **STRICTLY FOR FURTHER SCIENTIFIC RESEARCH USE ONLY (RUO). MUST NOT TO BE USED IN DIAGNOSTIC OR THERAPEUTIC APPLICATIONS.**



Western blot analysis of various lysates using MYO19 Rabbit monoclonal antibody (STJ11104123) at 1:500 dilution. Secondary antibody: HRP Goat Anti-Rabbit IgG (H+L) (STJS000856) at 1:10000 dilution. Lysates/proteins: 25 µg per lane. Blocking buffer: 3% nonfat dry milk in TBST. Detection: ECL Basic Kit. Exposure time: 180s.



Western blot analysis of lysates from Rat testis, using MYO19 Rabbit monoclonal antibody (STJ11104123) at 1:500 dilution. Secondary antibody: HRP Goat Anti-Rabbit IgG (H+L) (STJS000856) at 1:10000 dilution. Lysates/proteins: 25 µg per lane. Blocking buffer: 3% nonfat dry milk in TBST. Detection: ECL Basic Kit. Exposure time: 30s.