

Anti-RASSF2 antibody (227-326) [S4103RM] (STJ11104103)

GENERAL INFORMATION

Product Type	Primary antibodies
Applications	WB/ELISA
Host / Source	Rabbit
Reactivity	Human/Mouse/Rat

PRODUCT PROPERTIES

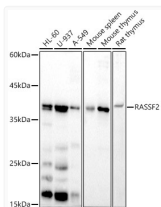
Clonality	Monoclonal
Concentration	Lot specific
Conjugation	Unconjugated
Purification	Affinity purification
Dilution Range	WB:1:100-1:500 ELISA:Recommended starting concentration is 1 µg/mL. Please optimize the concentration based on your specific assay requirements.
Formulation	PBS with 0.02% Sodium Azide, 0.05% BSA, 50% Glycerol, pH 7.3.
Isotype	IgG
Molecular Weight	Protein Mw: 38kDa Observed Mw: 38kDa
Storage Instruction	Store at -20°C for up to 1 year from the date of receipt, and avoid repeat freeze-thaw cycles.

TARGET INFORMATION

Gene ID	9770
Gene Symbol	RASSF2
UniProt ID	RASSF2_HUMAN
Immunogen Region	227-326
Immunogen Sequence	HTSGEKQKLIKATDYPLIARI LQGPCEQISKVFLMEKQDQVE EVTYDVAQYIKFEMPVLKSF IQKLQEEEDREVKKLMRKYTVLRLMIRQRLEEIAETPATI
Specificity	A synthetic peptide corresponding to a sequence within amino acids 227-326 of human RASSF2 (P50749).

ADDITIONAL INFORMATION

Note STRICTLY FOR FURTHER SCIENTIFIC RESEARCH USE ONLY (RUO). MUST NOT TO BE USED IN DIAGNOSTIC OR THERAPEUTIC APPLICATIONS.



Western blot analysis of various lysates, using RASSF2 Rabbit monoclonal antibody (STJ11104103) at 1:500 dilution. Secondary antibody: HRP Goat Anti-Rabbit IgG (H+L) (STJS000856) at 1:10000 dilution. Lysates/proteins: 25 µg per lane. Blocking buffer: 3% nonfat dry milk in TBST. Detection: ECL Basic Kit. Exposure time: 180s.