

Anti-RAD51D antibody (1-120) [S4088RM] (STJ11104088)

GENERAL INFORMATION

Product Type	Primary antibodies
Applications	WB/ELISA
Host / Source	Rabbit
Reactivity	Human/Mouse/Rat

PRODUCT PROPERTIES

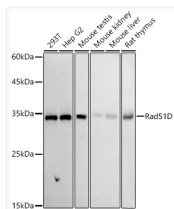
Clonality	Monoclonal
Concentration	Lot specific
Conjugation	Unconjugated
Purification	Affinity purification
Dilution Range	WB:1:500-1:1000 ELISA:Recommended starting concentration is 1 Mu g/mL. Please optimize the concentration based on your specific assay requirements.
Formulation	PBS with 0.02% Sodium Azide, 0.05% BSA, 50% Glycerol, pH 7.3.
Isotype	IgG
Molecular Weight	Protein Mw: 35kDa Observed Mw: 35kDa
Storage Instruction	Store at -20°C for up to 1 year from the date of receipt, and avoid repeat freeze-thaw cycles.

TARGET INFORMATION

Gene ID	5892
Gene Symbol	RAD51D
UniProt ID	R51D_HUMAN
Immunogen Region	1-120
Immunogen Sequence	MGVLRVGLCPGLTEEMIQLL RSHRIKTVVDLVSADLEEVA QKCGLSYKALVALRRVLLAQ FSAFPVNGADLYEELKTSTA ILSTGIGSLDKLLDAGLYTG EVTEIVGGPGSGKTQVCLCM
Specificity	Recombinant fusion protein containing a sequence corresponding to amino acids 1-120 of human Rad51D (O75771).

ADDITIONAL INFORMATION

Note STRICTLY FOR FURTHER SCIENTIFIC RESEARCH USE ONLY (RUO). MUST NOT TO BE USED IN DIAGNOSTIC OR THERAPEUTIC APPLICATIONS.



Western blot analysis of extracts of various lysates, using Rad51D antibody (STJ11104088) at 1:1000 dilution. Secondary antibody: HRP Goat Anti-Rabbit IgG (H+L) (STJS000856) at 1:10000 dilution. Lysates/proteins: 25 Mu g per lane. Blocking buffer: 3% nonfat dry milk in TBST. Detection: ECL Basic Kit. Exposure time: 90s.