

## Anti-LDHC antibody (1-100) [S4087RM] (STJ11104087)

### GENERAL INFORMATION

Product Type	Primary antibodies
Applications	WB/ELISA
Host / Source	Rabbit
Reactivity	Human

### PRODUCT PROPERTIES

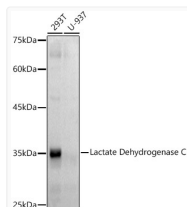
Clonality	Monoclonal
Concentration	Lot specific
Conjugation	Unconjugated
Purification	Affinity purification
Dilution Range	WB:1:100-1:500 ELISA:Recommended starting concentration is 1 µg/mL. Please optimize the concentration based on your specific assay requirements.
Formulation	PBS with 0.02% Sodium Azide, 0.05% BSA, 50% Glycerol, pH 7.3.
Isotype	IgG
Molecular Weight	Protein Mw: 36kDa Observed Mw: 36kDa
Storage Instruction	Store at -20°C for up to 1 year from the date of receipt, and avoid repeat freeze-thaw cycles.

### TARGET INFORMATION

Gene ID	<a href="#">3948</a>
Gene Symbol	<a href="#">LDHC</a>
UniProt ID	<a href="#">LDHC_HUMAN</a>
Immunogen Region	1-100
Immunogen Sequence	MSTVKEQLIEKLIEDDENSQ CKITIVGTGAVGMACAISIL LKDLADELALVDVALDKLKG EMMDLQHGSLFFSTKITSG KDYSVANSRIVIVTAGARQ
Specificity	A synthetic peptide corresponding to a sequence within amino acids 1-100 of human Lactate Dehydrogenase C (P07864).

### ADDITIONAL INFORMATION

Note **STRICTLY FOR FURTHER SCIENTIFIC RESEARCH USE ONLY (RUO). MUST NOT TO BE USED IN DIAGNOSTIC OR THERAPEUTIC APPLICATIONS.**



Western blot analysis of extracts of various cell lines, using Lactate Dehydrogenase C antibody (STJ11104087) at 1:500 dilution. Secondary antibody: HRP Goat Anti-Rabbit IgG (H+L) (STJS000856) at 1:10000 dilution. Lysates/proteins: 25 µg per lane. Blocking buffer: 3% nonfat dry milk in TBST. Detection: ECL Basic Kit. Exposure time: 60s.