

## Anti-Ly-6G antibody (27-105) (STJ11104086)

### GENERAL INFORMATION

|               |                    |
|---------------|--------------------|
| Product Type  | Primary antibodies |
| Applications  | WB/IF/ICC/ELISA    |
| Host / Source | Rabbit             |
| Reactivity    | Mouse              |

### PRODUCT PROPERTIES

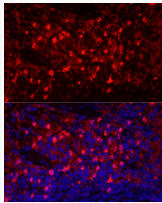
|                     |   |
|---------------------|---|
| Clonality           | Polyclonal  |
| Concentration       | Lot specific  |
| Conjugation         | Unconjugated  |
| Purification        | Affinity purification   |
| Dilution Range      | WB:1:500-1:1000<br>IF/CC:1:50-1:200<br>ELISA:Recommended starting concentration is 1 $\mu$ g/mL. Please optimize the concentration based on your specific assay requirements. |
| Formulation         | PBS with 0.05% Proclin300, 50% Glycerol, pH 7.3.  |
| Isotype             | IgG   |
| Molecular Weight    | Protein Mw: 14kDa<br>Observed Mw: 20-40kDa  |
| Storage Instruction | Store at -20°C for up to 1 year from the date of receipt, and avoid repeat freeze-thaw cycles.  |

### TARGET INFORMATION

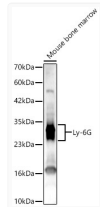
|                    |   |
|--------------------|---|
| Gene ID            | <a href="#">546644</a>  |
| Gene Symbol        | <a href="#">Ly6g</a>  |
| UniProt ID         | <a href="#">LY6G_MOUSE</a>  |
| Immunogen Region   | 27-105  |
| Immunogen Sequence | LECYNCIGVPPETSCNTTTC PFSDGFCVALEIEVIVDSHR SKVKSNLCLPICPTTLDNTE<br>ITGNAVNVKTYCKEDLCN                                  |
| Specificity        | Recombinant fusion protein containing a sequence corresponding to amino acids 27-105 of mouse Ly-6G (NP_001297367.1). |

### ADDITIONAL INFORMATION

Note STRICTLY FOR FURTHER SCIENTIFIC RESEARCH USE ONLY (RUO). MUST NOT TO BE USED IN DIAGNOSTIC OR THERAPEUTIC APPLICATIONS.



Immunofluorescence analysis of mouse spleen cells using Ly-6G Rabbit polyclonal antibody (STJ11104086) at dilution of 1:50 (40x lens). Blue: DAPI for nuclear staining.



Western blot analysis of Mouse bone marrow, using Ly-6G Rabbit polyclonal antibody (STJ11104086) at 1:400 dilution. Secondary antibody: HRP Goat Anti-Rabbit IgG (H+L) (STJS000856) at 1:10000 dilution. Lysates/proteins: 25 $\mu$ g per lane. Blocking buffer: 3% nonfat dry milk in TBST. Detection: ECL Basic Kit. Exposure time: 180s.