

## Anti-Gm antibody [S4063RM] (STJ11104063)

### GENERAL INFORMATION

Product Type	Primary antibodies
Applications	DB/ELISA
Host / Source	Rabbit
Reactivity	Species Independent

### PRODUCT PROPERTIES

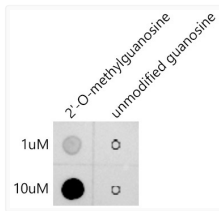
Clonality	Monoclonal
Concentration	Lot specific
Conjugation	Unconjugated
Purification	Affinity purification
Dilution Range	DB:1:500-1:2000 ELISA: Recommended starting concentration is 1 $\mu$ g/mL. Please optimize the concentration based on your specific assay requirements.
Formulation	PBS with 0.05% Proclin300, 0.05% BSA, 50% Glycerol, pH 7.3.
Isotype	IgG
Molecular Weight	Refer to figures
Storage Instruction	Store at -20°C for up to 1 year from the date of receipt, and avoid repeat freeze-thaw cycles.

### TARGET INFORMATION

Immunogen Sequence	Gm conjugated to KLH
Specificity	Gm

### ADDITIONAL INFORMATION

Note STRICTLY FOR FURTHER SCIENTIFIC RESEARCH USE ONLY (RUO). MUST NOT TO BE USED IN DIAGNOSTIC OR THERAPEUTIC APPLICATIONS.



The 2 NA-O-methylguanosine (Gm) Rabbit monoclonal antibody (STJ11104063) are tested in Dot Blot against 2 NA-O-methylguanosine and unmodified guanosine. 2 NA-O-methylguanosine: Biotin-5 NA GCATAATGACTACT (Gm) 3 NA unmodified guanosine: Biotin-5 NA GCATAATGACTACTG3 NA