

Anti-2 NA-O-methylcytidine/Cm antibody [S4061RM] (STJ11104061)

GENERAL INFORMATION

Product Type	Primary antibodies
Applications	DB/ELISA
Host / Source	Rabbit
Reactivity	Species Independent

PRODUCT PROPERTIES

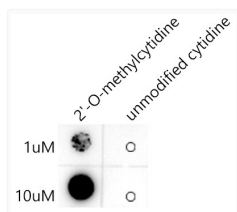
Clonality	Monoclonal
Concentration	Lot specific
Conjugation	Unconjugated
Purification	Affinity purification
Dilution Range	DB:1:500-1:2000 ELISA: Recommended starting concentration is 1 μ g/mL. Please optimize the concentration based on your specific assay requirements.
Formulation	PBS with 0.05% Proclin300, 0.05% BSA, 50% Glycerol, pH 7.3.
Isotype	IgG
Molecular Weight	Refer to figures
Storage Instruction	Store at -20°C for up to 1 year from the date of receipt, and avoid repeat freeze-thaw cycles.

TARGET INFORMATION

Immunogen Sequence	Cm conjugated to KLH
Specificity	Cm

ADDITIONAL INFORMATION

Note STRICTLY FOR FURTHER SCIENTIFIC RESEARCH USE ONLY (RUO). MUST NOT TO BE USED IN DIAGNOSTIC OR THERAPEUTIC APPLICATIONS.



The 2 NA-O-methylcytidine (Cm) Rabbit monoclonal antibody (STJ11104061) are tested in Dot Blot against 2 NA-O-methylcytidine and unmodified cytidine. 2 NA-O-methylcytidine : Biotin-5 NA CGATAACCACTAGT (Cm) 3 NA unmodified cytosine: Biotin-5 NA CGATAACCACTAGTC3 NA