

Anti-CYP4F11 antibody (60-130) (STJ11104057)

GENERAL INFORMATION

Product Type	Primary antibodies
Applications	IF/ICC/ELISA
Host / Source	Rabbit
Reactivity	Human

PRODUCT PROPERTIES

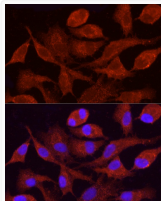
Clonality	Polyclonal
Concentration	Lot specific
Conjugation	Unconjugated
Purification	Affinity purification
Dilution Range	IF/ICC:1:50-1:200 ELISA:Recommended starting concentration is 1 µg/mL. Please optimize the concentration based on your specific assay requirements.
Formulation	PBS with 0.05% Proclin300, 50% Glycerol, pH 7.3.
Isotype	IgG
Molecular Weight	Protein Mw: 60kDa Observed Mw: Refer to figures
Storage Instruction	Store at -20°C for up to 1 year from the date of receipt, and avoid repeat freeze-thaw cycles.

TARGET INFORMATION

Gene ID	57834
Gene Symbol	CYP4F11
UniProt ID	CP4FB_HUMAN
Immunogen Region	60-130
Immunogen Sequence	FWGHQGLVTPTEEGMKTQTQ LVTTYPQGFKLWLGPTFFLL ILCHPDIIRPITSASAAVAP KDMIFYGFLKP
Specificity	Recombinant fusion protein containing a sequence corresponding to amino acids 60-130 of human CYP4F11 (NP_001122404.1).

ADDITIONAL INFORMATION

Note STRICTLY FOR FURTHER SCIENTIFIC RESEARCH USE ONLY (RUO). MUST NOT TO BE USED IN DIAGNOSTIC OR THERAPEUTIC APPLICATIONS.



Immunofluorescence analysis of A-549 cells using CYP4F11 Rabbit polyclonal antibody (STJ11104057) at dilution of 1:50 (40x lens). Blue: DAPI for nuclear staining.