

Anti-MOC3 antibody (98-289 aa) (STJ11104032)

GENERAL INFORMATION

Product Type	Primary antibodies
Applications	WB/ELISA
Host / Source	Rabbit
Reactivity	O.sativa

PRODUCT PROPERTIES

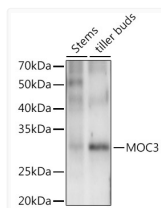
Clonality	Polyclonal
Concentration	Lot specific
Conjugation	Unconjugated
Purification	Affinity purification
Dilution Range	WB:1:500-1:2000 ELISA:Recommended starting concentration is 1 µg/mL. Please optimize the concentration based on your specific assay requirements.
Formulation	PBS with 0.05% Proclin300, 50% Glycerol, pH 7.3.
Isotype	IgG
Molecular Weight	Protein Mw: 31kDa Observed Mw: 31kDa
Storage Instruction	Store at -20°C for up to 1 year from the date of receipt, and avoid repeat freeze-thaw cycles.

TARGET INFORMATION

Immunogen Region	98-289 aa
Immunogen Sequence	LTTLDVTTTTAAAADADASH LAVLSLSPTAAGATAPSFPG FYVGNNGGAVQTDQANVVNWD CTAMAAEKTFLQDYMVGVSQV GCAAGAAPTWPAMTTTTREP ETLPLFPVVFVGGDGAHRHA VHGGFSPNFQRWGSAAATSN TITVQQHLQQHNFYSSSSQ LHSQDGPAAGTSLLELTSSY YCSCSPYPAGSM
Specificity	Recombinant fusion protein containing a sequence corresponding to amino acids 98-289 of <i>Oryza sativa</i> MOC3. (Q7XM13).

ADDITIONAL INFORMATION

Note **STRICTLY FOR FURTHER SCIENTIFIC RESEARCH USE ONLY (RUO). MUST NOT TO BE USED IN DIAGNOSTIC OR THERAPEUTIC APPLICATIONS.**



Western blot analysis of extracts of various tissues from the japonica rice (*Oryza sativa* L.) variety Zhonghua 11, using MOC3 Rabbit polyclonal antibody (STJ11104032) at 1:1000 dilution. Secondary antibody: HRP Goat Anti-Rabbit IgG (H+L) (STJS000856) at 1:10000 dilution. Lysates/proteins: 25 µg per lane. Blocking buffer: 3% nonfat dry milk in TBST. Detection: ECL Enhanced Kit. Exposure time: 60s.