

## Anti-BC12 antibody (840-970 aa) (STJ11104025)

### GENERAL INFORMATION

Product Type	Primary antibodies
Applications	WB/ELISA
Host / Source	Rabbit
Reactivity	O.sativa

### PRODUCT PROPERTIES

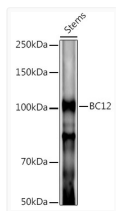
Clonality	Polyclonal
Concentration	Lot specific
Conjugation	Unconjugated
Purification	Affinity purification
Dilution Range	WB:1:500-1:2000 ELISA:Recommended starting concentration is 1 $\mu$ g/mL. Please optimize the concentration based on your specific assay requirements.
Formulation	PBS with 0.05% Proclin300, 50% Glycerol, pH 7.3.
Isotype	IgG
Molecular Weight	Protein Mw: 116kDa Observed Mw: 116kDa
Storage Instruction	Store at -20°C for up to 1 year from the date of receipt, and avoid repeat freeze-thaw cycles.

### TARGET INFORMATION

Immunogen Region	840-970 aa
Immunogen Sequence	EAKSLLQYIFNVAADARCQV REKEMEIKEMKEQMTLVTI LRHSESRRRETEKQLKQREQ AAVTATTSPGNGNGSVKHSA DDSNTPLSPVAVPAQKQLKY SAGIVNSPSKGVPAFKNQHL KMVPMAQLPVG
Specificity	Recombinant fusion protein containing a sequence corresponding to amino acids 840-970 of <i>Oryza sativa</i> BC12. (Q6YUL8).

### ADDITIONAL INFORMATION

Note STRICTLY FOR FURTHER SCIENTIFIC RESEARCH USE ONLY (RUO). MUST NOT TO BE USED IN DIAGNOSTIC OR THERAPEUTIC APPLICATIONS.



Western blot analysis of extracts of various tissues from the japonica rice (*Oryza sativa* L.) variety Zhonghua 11, using BC12 Rabbit polyclonal antibody (STJ11104025) at 1:1000 dilution. Secondary antibody: HRP Goat Anti-Rabbit IgG (H+L) (STJS000856) at 1:10000 dilution. Lysates/proteins: 25  $\mu$ g per lane. Blocking buffer: 3% nonfat dry milk in TBST. Detection: ECL Basic Kit. Exposure time: 120s.