

## Anti-MGRN1 antibody (1-538) (STJ11103981)

### GENERAL INFORMATION

Product Type	Primary antibodies
Applications	WB/IF/ICC/ELISA
Host / Source	Rabbit
Reactivity	Mouse/Rat

### PRODUCT PROPERTIES

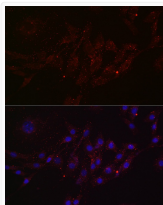
Clonality	Polyclonal
Concentration	Lot specific
Conjugation	Unconjugated
Purification	Affinity purification
Dilution Range	WB:1:500-1:1000 IF/CC:1:50-1:200 ELISA:Recommended starting concentration is 1 Mu g/mL. Please optimize the concentration based on your specific assay requirements.
Formulation	PBS with 0.05% Proclin300, 50% Glycerol, pH 7.3.
Isotype	IgG
Molecular Weight	Protein Mw: 61kDa Observed Mw: 70kDa
Storage Instruction	Store at -20°C for up to 1 year from the date of receipt, and avoid repeat freeze-thaw cycles.

### TARGET INFORMATION

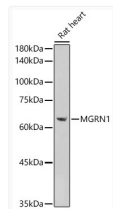
Gene ID	<a href="#">23295</a>
Gene Symbol	<a href="#">MGRN1</a>
UniProt ID	<a href="#">MGRN1_HUMAN</a>
Immunogen Region	1-538
Immunogen Sequence	MGSILSRRIAGVEDIDIQAN SAYRYPPKSGNYFASHFFMG GEKFDTPHPEGYLFGENMDL NFLGSRPQFPYVTPAPHEP VKTLRSLVNIRKDSLRLVRY KDDADSPTEEDGDKPRVLYSL EFTFDADARVAITIIYQQASE EFLNGRAVYSPKSPSLQSET VHYKRGVSQQFSLPSFKIDF SEWKDDELNFDLDRGVFPVV IQAVVDEGDVVEVTGHAHVL LAAFEKHMDGGSFVVKPLKQ
Specificity	Recombinant fusion protein containing a sequence corresponding to amino acids 1-538 of human MGRN1 (O60291).

### ADDITIONAL INFORMATION

Note STRICTLY FOR FURTHER SCIENTIFIC RESEARCH USE ONLY (RUO). MUST NOT TO BE USED IN DIAGNOSTIC OR THERAPEUTIC APPLICATIONS.



Immunofluorescence analysis of NIH/3T3 cells using MGRN1 Rabbit polyclonal antibody (STJ11103981) at dilution of 1:100 (40x lens). Blue: DAPI for nuclear staining.



Western blot analysis of extracts of Rat heart, using MGRN1 antibody (STJ11103981) at 1:1000 dilution. Secondary antibody: HRP Goat Anti-Rabbit IgG (H+L) (STJS000856) at 1:10000 dilution. Lysates/proteins: 25 Mu g per lane. Blocking buffer: 3% nonfat dry milk in TBST. Detection: ECL Basic Kit. Exposure time: 90s.