

Anti-BSN antibody (830-950) (STJ11103979)

GENERAL INFORMATION

Product Type	Primary antibodies
Applications	WB/IF/ICC/ELISA
Host / Source	Rabbit
Reactivity	Human/Mouse

PRODUCT PROPERTIES

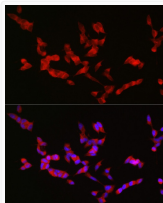
Clonality	Polyclonal
Concentration	Lot specific
Conjugation	Unconjugated
Purification	Affinity purification
Dilution Range	WB:1:500-1:2000 IF/CC:1:50-1:200 ELISA:Recommended starting concentration is 1 Mu g/mL. Please optimize the concentration based on your specific assay requirements.
Formulation	PBS with 0.05% Proclin300, 50% Glycerol, pH 7.3.
Isotype	IgG
Molecular Weight	Protein Mw: 416kDa Observed Mw: Refer to figures
Storage Instruction	Store at -20°C for up to 1 year from the date of receipt, and avoid repeat freeze-thaw cycles.

TARGET INFORMATION

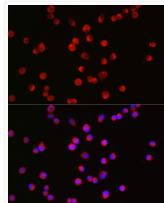
Gene ID	8927
Gene Symbol	BSN
UniProt ID	BSN_HUMAN
Immunogen Region	830-950
Immunogen Sequence	PPARAAELTDEDFMRRQILE MSAEEDNLEEDDTATSGRGL AKHGTQKGGPRPRPEPSQEP AALPKRRLPHNATTGYEELL PEGGSAEATDGGSTLQGGLR RFKTIELNSTGSYGHEDLG Q
Specificity	Recombinant fusion protein containing a sequence corresponding to amino acids 830-950 of human BSN (NP_003449.2).

ADDITIONAL INFORMATION

Note STRICTLY FOR FURTHER SCIENTIFIC RESEARCH USE ONLY (RUO). MUST NOT TO BE USED IN DIAGNOSTIC OR THERAPEUTIC APPLICATIONS.



Immunofluorescence analysis of SH-SY5Y cells using BSN Rabbit polyclonal antibody (STJ11103979) at dilution of 1:50 (40x lens). Blue: DAPI for nuclear staining.



Immunofluorescence analysis of Neuro-2a cells using BSN Rabbit polyclonal antibody (STJ11103979) at dilution of 1:50 (40x lens). Blue: DAPI for nuclear staining.