

Anti-PPP1R3C antibody (1-150) (STJ11103977)

GENERAL INFORMATION

Product Type	Primary antibodies
Applications	IHC-P/IF/ICC/ELISA
Host / Source	Rabbit
Reactivity	Human/Mouse/Rat

PRODUCT PROPERTIES

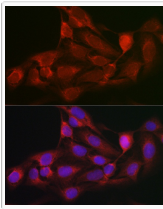
Clonality	Polyclonal
Concentration	Lot specific
Conjugation	Unconjugated
Purification	Affinity purification
Dilution Range	IHC-P:1:50-1:200 IF/CC:1:50-1:200 ELISA:Recommended starting concentration is 1 Mu g/mL. Please optimize the concentration based on your specific assay requirements.
Formulation	PBS with 0.05% Proclin300, 50% Glycerol, pH 7.3.
Isotype	IgG
Molecular Weight	Protein Mw: 36kDa Observed Mw: Refer to figures
Storage Instruction	Store at -20°C for up to 1 year from the date of receipt, and avoid repeat freeze-thaw cycles.

TARGET INFORMATION

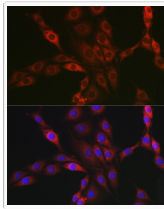
Gene ID	5507
Gene Symbol	PPP1R3C
UniProt ID	PPR3C_HUMAN
Immunogen Region	1-150
Immunogen Sequence	MSCTRMIQVLDPRLTSSVM PVDVAMRLCLAHSPVKSFL GPYDEFQRRHFVNKLKPLKS CLNIKHKAKSQNDWKCSHNQ AKKR VVFADSKGLSLTAHV FSDLPEEPAWDLQFDLLDLN DISSALKHHEEKNLILDFPQ PSTDYLSFRS
Specificity	Recombinant fusion protein containing a sequence corresponding to amino acids 1-150 of human PPP1R3C (NP_005389.1).

ADDITIONAL INFORMATION

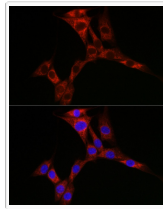
Note	STRICTLY FOR FURTHER SCIENTIFIC RESEARCH USE ONLY (RUO). MUST NOT TO BE USED IN DIAGNOSTIC OR THERAPEUTIC APPLICATIONS.
------	---



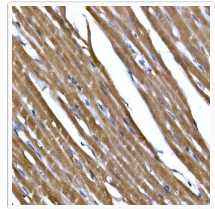
Immunofluorescence analysis of U2OS cells using PPP1R3C Rabbit polyclonal antibody (STJ11103977) at dilution of 1:50 (40x lens). Blue: DAPI for nuclear staining.



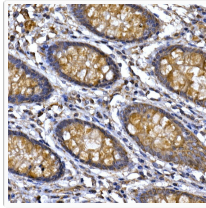
Immunofluorescence analysis of PC-12 cells using PPP1R3C Rabbit polyclonal antibody (STJ11103977) at dilution of 1:50 (40x lens). Blue: DAPI for nuclear staining.



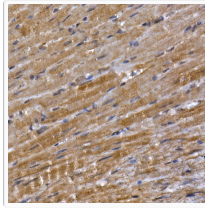
Immunofluorescence analysis of NIH/3T3 cells using PPP1R3C Rabbit polyclonal antibody (STJ11103977) at dilution of 1:50 (40x lens). Blue: DAPI for nuclear staining.



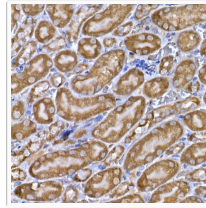
Immunohistochemistry analysis of paraffin-embedded Rat heart using PPP1R3C antibody (STJ11103977) at dilution of 1:50 (40x lens). Perform high pressure antigen retrieval with 10 mM citrate buffer pH 6. 0 before commencing with immunohistochemistry staining protocol.



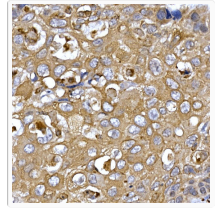
Immunohistochemistry analysis of paraffin-embedded human colon using PPP1R3C antibody (STJ11103977) at dilution of 1:50 (40x lens). Perform high pressure antigen retrieval with 10 mM citrate buffer pH 6. 0 before commencing with immunohistochemistry staining protocol.



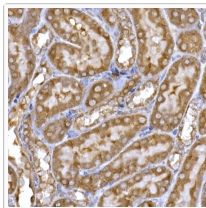
Immunohistochemistry analysis of paraffin-embedded Mouse heart using PPP1R3C antibody (STJ11103977) at dilution of 1:50 (40x lens). Perform high pressure antigen retrieval with 10 mM citrate buffer pH 6. 0 before commencing with immunohistochemistry staining protocol.



Immunohistochemistry analysis of paraffin-embedded Mouse kidney using PPP1R3C antibody (STJ11103977) at dilution of 1:50 (40x lens). Perform high pressure antigen retrieval with 10 mM citrate buffer pH 6. 0 before commencing with immunohistochemistry staining protocol.



Immunohistochemistry analysis of paraffin-embedded human esophageal cancer using PPP1R3C antibody (STJ11103977) at dilution of 1:50 (40x lens). Perform high pressure antigen retrieval with 10 mM citrate buffer pH 6. 0 before commencing with immunohistochemistry staining protocol.



Immunohistochemistry analysis of paraffin-embedded Rat kidney using PPP1R3C antibody (STJ11103977) at dilution of 1:50 (40x lens). Perform high pressure antigen retrieval with 10 mM citrate buffer pH 6. 0 before commencing with immunohistochemistry staining protocol.