

## Anti-TOMM5 antibody (1-51) (STJ11103974)

### GENERAL INFORMATION

Product Type	Primary antibodies
Applications	IF/ICC/ELISA
Host / Source	Rabbit
Reactivity	Human/Mouse

### PRODUCT PROPERTIES

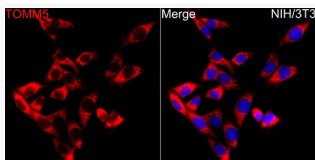
Clonality	Polyclonal
Concentration	Lot specific
Conjugation	Unconjugated
Purification	Affinity purification
Dilution Range	IF/ICC:1:50-1:200 ELISA:Recommended starting concentration is 1 $\mu$ g/mL. Please optimize the concentration based on your specific assay requirements.
Formulation	PBS with 0.05% Proclin300, 50% Glycerol, pH 7.3.
Isotype	IgG
Molecular Weight	Protein Mw: 6kDa Observed Mw: Refer to figures
Storage Instruction	Store at -20°C for up to 1 year from the date of receipt, and avoid repeat freeze-thaw cycles.

### TARGET INFORMATION

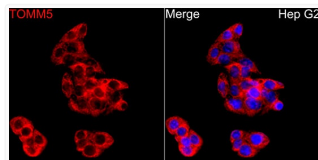
Gene ID	<a href="#">401505</a>
Gene Symbol	<a href="#">TOMM5</a>
UniProt ID	<a href="#">TOM5_HUMAN</a>
Immunogen Region	1-51
Immunogen Sequence	MFRIEGLAPKLDPEEMKRKM REDVISSIRNFLIYVALLRV TPFILKKLDSI
Specificity	A synthetic peptide corresponding to a sequence within amino acids 1-51 of human TOMM5 (NP_001001790.1).

### ADDITIONAL INFORMATION

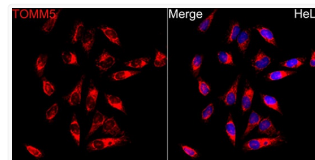
Note STRICTLY FOR FURTHER SCIENTIFIC RESEARCH USE ONLY (RUO). MUST NOT TO BE USED IN DIAGNOSTIC OR THERAPEUTIC APPLICATIONS.



Immunofluorescence analysis of NIH/3T3 cells using TOMM5 Rabbit polyclonal antibody (STJ11103974) at dilution of 1:200 (40x lens). Blue: DAPI for nuclear staining.



Immunofluorescence analysis of HepG2 cells using TOMM5 Rabbit polyclonal antibody (STJ11103974) at dilution of 1:200 (40x lens). Blue: DAPI for nuclear staining.



Immunofluorescence analysis of HeLa cells using TOMM5 Rabbit polyclonal antibody (STJ11103974) at dilution of 1:200 (40x lens). Blue: DAPI for nuclear staining.