

Anti-FGL1 antibody (Full Length) [S3965RM] (STJ11103965)

GENERAL INFORMATION

Product Type	Primary antibodies
Applications	WB/ELISA
Host / Source	Rabbit
Reactivity	Human

PRODUCT PROPERTIES

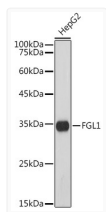
Clonality	Monoclonal
Concentration	Lot specific
Conjugation	Unconjugated
Purification	Affinity purification
Dilution Range	WB:1:500-1:1000 ELISA:Recommended starting concentration is 1 Mu g/mL. Please optimize the concentration based on your specific assay requirements.
Formulation	PBS with 0.09% Sodium Azide, 0.05% BSA, 50% Glycerol, pH7.3.
Isotype	IgG
Molecular Weight	Protein Mw: 36kDa Observed Mw: 35kDa
Storage Instruction	Store at -20°C for up to 1 year from the date of receipt, and avoid repeat freeze-thaw cycles.

TARGET INFORMATION

Gene ID	2267
Gene Symbol	FGL1
UniProt ID	FGL1_HUMAN
Immunogen Region	Full Length
Immunogen Sequence	MAKVFSFILVTTALTMGREI SALEDCAQEQMRLRAQVRLLETRVKQQQVKIKQLLQENEV QFLDKGDENTVIDLGSKRQY ADCSEIFNDGYKLSGFYKIK PLQSPAEFVSVYCDMSDGGGW TVIQRRSDGSENFNRGWKDY ENGFGNFVQKHGEYWLGNKN LHFLTTQEDYTLKIDLADFE KNSRYAQYKNFKVGDEKNFY ELNIGEYSGTAGDSLGNFHVPEVQWWASHQRMKFSTWDR
Specificity	Recombinant protein of human FGL-1 Full length (NP_004458.3).

ADDITIONAL INFORMATION

Note STRICTLY FOR FURTHER SCIENTIFIC RESEARCH USE ONLY (RUO). MUST NOT TO BE USED IN DIAGNOSTIC OR THERAPEUTIC APPLICATIONS.



Western blot analysis of extracts of HepG2 cells, using FGL1 antibody (STJ11103965) at 1:1000 dilution. Secondary antibody: HRP Goat Anti-Rabbit IgG (H+L) (STJS000856) at 1:10000 dilution. Lysates/proteins: 25 Mu g per lane. Blocking buffer: 3% nonfat dry milk in TBST. Detection: ECL Basic Kit. Exposure time: 90s.