

Anti-CD3E+CD3G antibody (1-207) [S3942RM] (STJ11103942)

GENERAL INFORMATION

Product Type	Primary antibodies
Applications	WB/FC/ELISA
Host / Source	Rabbit
Reactivity	Human

PRODUCT PROPERTIES

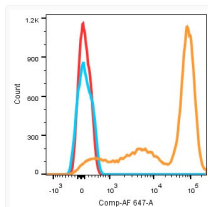
Clonality	Monoclonal
Concentration	Lot specific
Conjugation	Unconjugated
Purification	Affinity purification
Dilution Range	WB:1:1000-1:5000 FC:1:500-1:1000 ELISA:Recommended starting concentration is 1 Mu g/mL. Please optimize the concentration based on your specific assay requirements.
Formulation	PBS with 0.05% Proclin300, 0.05% BSA, 50% Glycerol, pH 7.3.
Isotype	IgG
Molecular Weight	Protein Mw: 23kDa Observed Mw: 23kDa
Storage Instruction	Store at -20°C for up to 1 year from the date of receipt, and avoid repeat freeze-thaw cycles.

TARGET INFORMATION

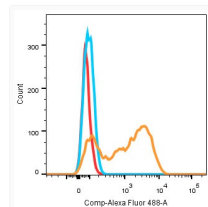
Gene ID	917 916
Gene Symbol	CD3G CD3E
UniProt ID	CD3G_HUMAN CD3E_HUMAN
Immunogen Region	1-207
Immunogen Sequence	MQSGTHWRVGLCLLSVGWV QDGNEMGGITQTPYKVISI SGTTVILTCPQYPGSEILWQ HNDKNIGGDEDDKNIGSDED HLSLKEFSELEQSGYYVCYP RGSKPEDANFYLYLRARVCE NCMEMDVMSVATIVVDICI TGGLLLLLVYWSKNRKAkak PVTRGAGAGGRQRGQNKERP PPVNPDPYEPIRKGQRDLYS GLNQRRRI (CD3E) & MEQGGK LAVLILAILLQGTLAQ
Specificity	Recombinant fusion protein containing a sequence corresponding to amino acids 1-207 (CD3E) & 1-182 (CD3G) of human CD3 epsilon&CD3 gamma Heterodimer.

ADDITIONAL INFORMATION

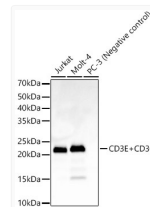
Note STRICTLY FOR FURTHER SCIENTIFIC RESEARCH USE ONLY (RUO). MUST NOT TO BE USED IN DIAGNOSTIC OR THERAPEUTIC APPLICATIONS.



Human peripheral blood lymphocytes stained with CD3E+CD3G Rabbit monoclonal antibody (STJ11103942) (1 Mu g/mL) (orange). Secondary antibody only staining (Blue) and unstained sample (red) were used as a control.



Flow cytometric analysis of CD3E+CD3G Rabbit monoclonal antibody (STJ11103942) (1 Mu g/mL) in Jurkats cells (orange) compare to rabbit IgG isotype control (blue) and non-staining control (Red).



Western blot analysis of various lysates, using CD3E+CD3G Rabbit monoclonal antibody (STJ11103942) at 1:2000 dilution. Secondary antibody: HRP Goat Anti-Rabbit IgG (H+L) (STJS000856) at 1:10000 dilution. Lysates/proteins: 25 Mu g per lane. Blocking buffer: 3% nonfat dry milk in TBST. Detection: ECL Basic Kit. Exposure time: 60s.