

Anti-SLC3A2 antibody (461-630) (STJ11103936)

GENERAL INFORMATION

Product Type	Primary antibodies
Applications	WB/ELISA
Host / Source	Rabbit
Reactivity	Human/Mouse/Rat

PRODUCT PROPERTIES

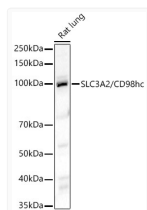
Clonality	Polyclonal
Concentration	Lot specific
Conjugation	Unconjugated
Purification	Affinity purification
Dilution Range	WB:1:500-1:1000 ELISA:Recommended starting concentration is 1 µg/mL. Please optimize the concentration based on your specific assay requirements.
Formulation	PBS with 0.05% Proclin300, 50% Glycerol, pH 7.3.
Isotype	IgG
Molecular Weight	Protein Mw: 58kDa Observed Mw: 75-120kDa
Storage Instruction	Store at -20°C for up to 1 year from the date of receipt, and avoid repeat freeze-thaw cycles.

TARGET INFORMATION

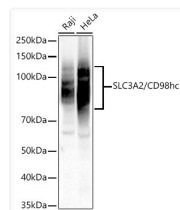
Gene ID	6520
Gene Symbol	SLC3A2
UniProt ID	4F2_HUMAN
Immunogen Region	461-630
Immunogen Sequence	PGTPVFSYGDEIGLDAAALP GQPMEAPVMLWDESSFPDIP GAVSANMTVKGQSEDPGSLLSLFRRLSDQRSKERSLLHGD FHAFSAGPGLFSYIRHWDQN ERFLVVLNFGDVGLSAGLQASDLPASASLPKADLLLTQ PGREEGSPLELERLKLEPHE GLLLRFPYAA
Specificity	Recombinant fusion protein containing a sequence corresponding to amino acids 461-630 of human SLC3A2/CD98hc (NP_002385.3).

ADDITIONAL INFORMATION

Note **STRICTLY FOR FURTHER SCIENTIFIC RESEARCH USE ONLY (RUO). MUST NOT TO BE USED IN DIAGNOSTIC OR THERAPEUTIC APPLICATIONS.**



Western blot analysis of lysates from Rat lung, using SLC3A2/CD98hc Rabbit polyclonal antibody (STJ11103936) at 1:1000 dilution. Secondary antibody: HRP Goat Anti-Rabbit IgG (H+L) (STJS000856) at 1:10000 dilution. Lysates/proteins: 25 µg per lane. Blocking buffer: 3% nonfat dry milk in TBST. Detection: ECL Basic Kit. Exposure time: 60s.



Western blot analysis of various lysates, using SLC3A2/CD98hc Rabbit polyclonal antibody (STJ11103936) at 1:1000 dilution. Secondary antibody: HRP Goat Anti-Rabbit IgG (H+L) (STJS000856) at 1:10000 dilution. Lysates/proteins: 25 µg per lane. Blocking buffer: 3% nonfat dry milk in TBST. Detection: ECL Basic Kit. Exposure time: 3s.