

Anti-ITPR2 antibody (2415-2480) (STJ11103923)

GENERAL INFORMATION

Product Type	Primary antibodies
Applications	IHC-P/IF/ICC/ELISA
Host / Source	Rabbit
Reactivity	Human/Mouse/Rat

PRODUCT PROPERTIES

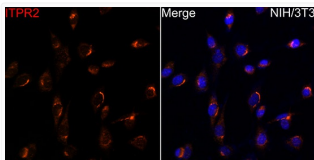
Clonality	Polyclonal
Concentration	Lot specific
Conjugation	Unconjugated
Purification	Affinity purification
Dilution Range	IHC-P:1:50-1:200 IF/CC:1:50-1:200 ELISA:Recommended starting concentration is 1 µg/mL. Please optimize the concentration based on your specific assay requirements.
Formulation	PBS with 0.01% Thimerosal, 50% Glycerol, pH 7.3.
Isotype	IgG
Molecular Weight	Protein Mw: 308kDa Observed Mw: Refer to figures
Storage Instruction	Store at -20°C for up to 1 year from the date of receipt, and avoid repeat freeze-thaw cycles.

TARGET INFORMATION

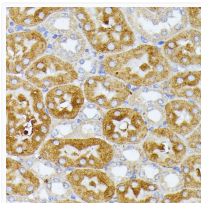
Gene ID	3709
Gene Symbol	ITPR2
UniProt ID	ITPR2_HUMAN
Immunogen Region	2415-2480
Immunogen Sequence	LFLKDDFTMEVDRLKRNTPV TGS HQVPTMTLTTMMEACAK ENCSPTIPASNTADEEYEDG IERTCD
Specificity	Recombinant fusion protein containing a sequence corresponding to amino acids 2415-2480 of human ITPR2 (NP_002214.2).

ADDITIONAL INFORMATION

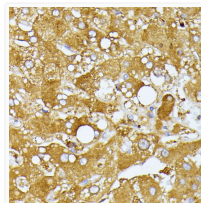
Note STRICTLY FOR FURTHER SCIENTIFIC RESEARCH USE ONLY (RUO). MUST NOT TO BE USED IN DIAGNOSTIC OR THERAPEUTIC APPLICATIONS.



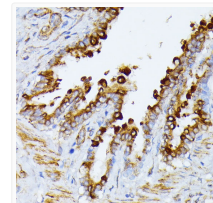
Immunofluorescence analysis of NIH/3T3 cells using ITPR2 Rabbit polyclonal antibody (STJ11103923) at dilution of 1:100 (40x lens). Secondary antibody: Cy3 Goat Anti-Rabbit IgG (H+L) at 1:500 dilution. Blue: DAPI for nuclear staining.



Immunohistochemistry analysis of ITPR2 in paraffin-embedded mouse kidney using ITPR2 Rabbit polyclonal antibody (STJ11103923) at dilution of 1:100 (40x lens). Perform microwave antigen retrieval with 10 mM PBS buffer pH 7.2 before commencing with immunohistochemistry staining protocol.



Immunohistochemistry analysis of ITPR2 in paraffin-embedded human liver using ITPR2 Rabbit polyclonal antibody (STJ11103923) at dilution of 1:100 (40x lens). Perform microwave antigen retrieval with 10 mM PBS buffer pH 7.2 before commencing with immunohistochemistry staining protocol.



Immunohistochemistry analysis of ITPR2 in paraffin-embedded rat lung using ITPR2 Rabbit polyclonal antibody (STJ11103923) at dilution of 1:100 (40x lens). Perform microwave antigen retrieval with 10 mM PBS buffer pH 7.2 before commencing with immunohistochemistry staining protocol.