

Anti-5-methylcytidine/m5C antibody (STJ11103906)

GENERAL INFORMATION

Product Type	Primary antibodies
Applications	DB/ELISA
Host / Source	Rabbit
Reactivity	Species Independent

PRODUCT PROPERTIES

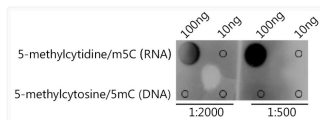
Clonality	Polyclonal
Concentration	Lot specific
Conjugation	Unconjugated
Purification	Affinity purification
Dilution Range	DB:1:500-1:2000 ELISA: Recommended starting concentration is 1 µg/mL. Please optimize the concentration based on your specific assay requirements.
Formulation	PBS with 0.05% Proclin300, 50% Glycerol, pH 7.3.
Isotype	IgG
Storage Instruction	Store at -20°C for up to 1 year from the date of receipt, and avoid repeat freeze-thaw cycles.

TARGET INFORMATION

Specificity	m5C
-------------	-----

ADDITIONAL INFORMATION

Note **STRICTLY FOR FURTHER SCIENTIFIC RESEARCH USE ONLY (RUO). MUST NOT TO BE USED IN DIAGNOSTIC OR THERAPEUTIC APPLICATIONS.**



The m5C rabbit polyclonal antibody (STJ11103906) are tested in Dot Blot against 5-methylcytidine (m5C) and 5-methylcytosine (5mC).