

Anti-PRCC antibody (240-491 aa) (STJ11103904)

GENERAL INFORMATION

Product Type	Primary antibodies
Applications	WB/ELISA
Host / Source	Rabbit
Reactivity	Human

PRODUCT PROPERTIES

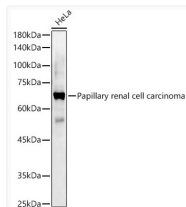
Clonality	Polyclonal
Concentration	Lot specific
Conjugation	Unconjugated
Purification	Affinity purification
Dilution Range	WB:1:500-1:1000 ELISA:Recommended starting concentration is 1 Mu g/mL. Please optimize the concentration based on your specific assay requirements.
Formulation	PBS with 0.05% Proclin300, 50% Glycerol, pH 7.3.
Isotype	IgG
Molecular Weight	Protein Mw: 52kDa Observed Mw: 66kDa
Storage Instruction	Store at -20°C for up to 1 year from the date of receipt, and avoid repeat freeze-thaw cycles.

TARGET INFORMATION

Gene ID	5546
Gene Symbol	PRCC
UniProt ID	PRCC_HUMAN
Immunogen Region	240-491 aa
Immunogen Sequence	PSPSAIKAAAKS AALQVTKQ ITQEEDDSDEEVAPENFFSL PEKAEP PGVEPYPIPTVP EELPPGTEPEPAFQDDAANA PLEFKMAAGSSGAPWMPKPG DDYSYNQFSTYGDANAAGAY YQDYSSGGYYPAQDPALVPP QEIAPDASFIDDEAFKRLQG KRNRGREEINFVEIKGDDQL SGAQQWMTKSLTEEKTMKSF SKKKGQPTGQQRRKHQITY LIHQAKERELKNTWSEN
Specificity	A synthetic peptide corresponding to a sequence within amino acids 240-491 of human Papillary renal cell carcinoma. (NP_005964.3).

ADDITIONAL INFORMATION

Note **STRICTLY FOR FURTHER SCIENTIFIC RESEARCH USE ONLY (RUO). MUST NOT TO BE USED IN DIAGNOSTIC OR THERAPEUTIC APPLICATIONS.**



Western blot analysis of HeLa, using Papillary renal cell carcinoma antibody (STJ11103904) at 1:1000 dilution. Secondary antibody: HRP Goat Anti-Rabbit IgG (H+L) (STJS000856) at 1:10000 dilution. Lysates/proteins: 25 Mu g per lane. Blocking buffer: 3% nonfat dry milk in TBST. Detection: ECL Enhanced Kit. Exposure time: 180s.