

Anti-RGS2 antibody (1-211) (STJ11103885)

GENERAL INFORMATION

Product Type	Primary antibodies
Applications	WB/IHC-P/ELISA
Host / Source	Rabbit
Reactivity	Human

PRODUCT PROPERTIES

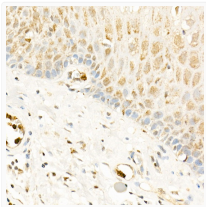
Clonality	Polyclonal
Concentration	Lot specific
Conjugation	Unconjugated
Purification	Affinity purification
Dilution Range	WB:1:500-1:2000 IHC-P:1:50-1:200 ELISA:Recommended starting concentration is 1 µg/mL. Please optimize the concentration based on your specific assay requirements.
Formulation	PBS with 0.02% Sodium Azide, 50% Glycerol, pH 7.3.
Isotype	IgG
Molecular Weight	Protein Mw: 24kDa Observed Mw: Refer to figures
Storage Instruction	Store at -20°C for up to 1 year from the date of receipt, and avoid repeat freeze-thaw cycles.

TARGET INFORMATION

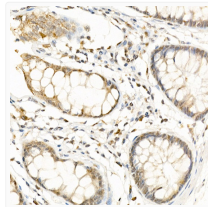
Gene ID	5997
Gene Symbol	RGS2
UniProt ID	RGS2_HUMAN
Immunogen Region	1-211
Immunogen Sequence	MQSAMFLAVQHDCRPMDKSA GSGHKSEEEKREKMKRLLKD WKTRLSYFLQNSSTPGKPKT GKSKQQAFIKPSPEEAQLW SEAFDELLASKYGLAAFRAL KSEFCEENIEFWLACEDFK KTKSPQKLSSKARKIYDFI EKEAPKEINIDFQTKTLIAQ NIQEATSGCFTTAQKRVSLS MENNYSYPRFLESEFYQDLCK KPQITTEPHAT
Specificity	Recombinant fusion protein containing a sequence corresponding to amino acids 1-211 of human RGS2 (NP_002914.1).

ADDITIONAL INFORMATION

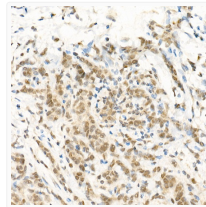
Note **STRICTLY FOR FURTHER SCIENTIFIC RESEARCH USE ONLY (RUO). MUST NOT TO BE USED IN DIAGNOSTIC OR THERAPEUTIC APPLICATIONS.**



Immunohistochemistry analysis of paraffin-embedded human esophagus using RGS2 Rabbit polyclonal antibody (STJ11103885) at dilution of 1:100 (40x lens). Perform high pressure antigen retrieval with 10 mM citrate buffer pH 6.0 before commencing with immunohistochemistry staining protocol.



Immunohistochemistry analysis of paraffin-embedded human colon using RGS2 Rabbit polyclonal antibody (STJ11103885) at dilution of 1:100 (40x lens). Perform high pressure antigen retrieval with 10 mM citrate buffer pH 6.0 before commencing with immunohistochemistry staining protocol.



Immunohistochemistry analysis of paraffin-embedded human breast cancer using RGS2 Rabbit polyclonal antibody (STJ11103885) at dilution of 1:100 (40x lens). Perform high pressure antigen retrieval with 10 mM citrate buffer pH 6.0 before commencing with immunohistochemistry staining protocol.