

Anti-ITGA10 antibody (801-1040 aa) (STJ11103864)

GENERAL INFORMATION

Product Type	Primary antibodies
Applications	WB/ELISA
Host / Source	Rabbit
Reactivity	Human/Mouse

PRODUCT PROPERTIES

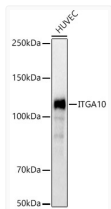
Clonality	Polyclonal
Concentration	Lot specific
Conjugation	Unconjugated
Purification	Affinity purification
Dilution Range	WB:1:500-1:1000 ELISA:Recommended starting concentration is 1 µg/mL. Please optimize the concentration based on your specific assay requirements.
Formulation	PBS with 0.09% Sodium Azide, 50% Glycerol, pH7.3.
Isotype	IgG
Molecular Weight	Protein Mw: 128kDa Observed Mw: 128kDa
Storage Instruction	Store at -20°C for up to 1 year from the date of receipt, and avoid repeat freeze-thaw cycles.

TARGET INFORMATION

Gene ID	8515
Gene Symbol	ITGA10
UniProt ID	ITA10_HUMAN
Immunogen Region	801-1040 aa
Immunogen Sequence	LQVNMDIRGSRKAPFVVRGG RRRKVLVSTLTLENRKENAYNT SLSLIFSRNLHLASLTPQRE SPIKVECAAPSAHARLCSVG HPVFQGTGAKVTFLLFEFEFSC SSLLSQVFKLTASSDSL NGTLQDNTAQTSAIYQYEPH LLFSSESTLHRYEVHPYGTLPVGGPPEFKTTLRQNLG VVSGLIISALLPAVAHGNGY FLSSQVITNNASCIVQNLTPPGPPVHPEELQHTNRLN
Specificity	A synthetic peptide corresponding to a sequence within amino acids 801-1040 of human ITGA10 (NP_003628.2).

ADDITIONAL INFORMATION

Note STRICTLY FOR FURTHER SCIENTIFIC RESEARCH USE ONLY (RUO). MUST NOT TO BE USED IN DIAGNOSTIC OR THERAPEUTIC APPLICATIONS.



Western blot analysis of HUVEC, using ITGA10 antibody (STJ11103864) at 1:500 dilution. Secondary antibody: HRP Goat Anti-Rabbit IgG (H+L) (STJS000856) at 1:10000 dilution. Lysates/proteins: 25 µg per lane. Blocking buffer: 3% nonfat dry milk in TBST. Detection: ECL Basic Kit. Exposure time: 0.8s.